

MIKITE

MIKITE GOLD RESOURCES LIMITED

TECHNICAL REPORT

NYINAHIN CONCESSION

CONTENT		Page
1.0	SUMMARY	1
2.0	BACKGROUND INFORMATION	3
2.1	Introduction	3
2.2	Terms of Reference	3
2.3	Purpose of Report	3
2.4	Source of information/Data	3
3.0	PROPERTY DESCRIPTIONS AND LOCATION	4
3.1	Location and Access	4
3.2	Relief and Drainage	6
3.3	Climate, Vegetation and Infrastructure	6
4.0	REGIONAL GEOLOGY AND MINERALIZATION	7
4.1	Regional Geology	7
4.2	Regional Mineralization	7
4.2.1	Boundary Faults Association	7
4.2.2	Intrabasinal Environment	7
4.3	Geology of the Belts	8
4.3.1	Asankrangwa – Manso Nkwanta Belt	8
4.3.2	Bibiani Belt	9
4.4	Structures	11
4.5	Local Geology	11
5.0	EXPLORATION HISTORY	11
6.0	METAMORPHIC FACIES	14
7.0	DEPOSIT TYPES	14
8.0	CURRENT EXPLORATION	14
8.1	Stream Sediments	14
8.2	Geological Mapping	14
8.3	GPS Reading	16
9.0	SAMPLING METHOD AND APPROACH	17
9.1	Stream Sediments	17
9.2	Geological Mapping	18
10.0	SAMPLE PREPARATION AND ANALYSIS	18
11.0	ADJACENT PROPERTY	19
12.0	MINERALIZATION	19
13.0	DISCUSSION AND INTERPRETATION	25

14.0	CONCLUSIONS AND RECOMMENDATION	28
15.0	APPLICATION FOR CONVERSION OF RECONNAISSANCE LICENCE TO PROSPECTING LICENCE	29
15.1	Specification	29
15.2	Proposed Work Programme	31
15.2.1	Phases I and II	22
15.2.2	Phases III and IV	32
16.0	COST ESTIMATES	34
17.0	ENVIRONMENTAL CONSIDERATION	35
18.0	TIME SCHEDULE	36
19.0	ACTIVITY CHART	36
20.0	REFERENCES	38

FIGURE

FIGURE		DESCRIPTION	PAGE
Figure	1	Geology of Ghana showing Nyinahin Concessions	5
Figure	2	Structural Map	12
Figure	3	Geological Map	13
Figure	4	Stream Sediment Sample Location	15
Figure	5	Mine Sites & Gold Prospects showing Nyinahin Concession	20
Figure	6	Gold –in-Stream Sediments	21
Figure	7	Anomalous Zones	26
Figure	8	Mineralized Trends	27
Figure	9	Site Plan -Conversion of Reconnaissance Licence to Prospecting Licence	30

TABLE

Table	1	Concession Pillar Co-ordinates	4
Table	2	Summary of Work done	16
Table	3	Statistics of Gold Results	19
Table	4	Pillar Coordinates	29
Table	5	Time Schedule	36
Table	6	Activity Chart –Year One	36
Table	7	Activity Chart –Year Two	37

APPENDICES

Appendix	I	Stream sediment sampling data log sheets	
Appendix	II	Analytical Results	

GRAPHS

Graph	1	Probability Plot of Sample Results	22
Graph	2	Log Probability Plot of Sample Results	23
Graph	3	Histogram of Sample Results	24

MIKITED GOLD RESOURCES LIMITED

NYINAHIN CONCESSION

TECHNICAL REPORT

APPENDIX I

STREAM SEDIMENT DATA LOG SHEET

AUGUST 2006

MIKITED GOLD RESOURCES LIMITED

NYINAHIN CONCESSION

TECHNICAL REPORT

APPENDIX II

ANALYTICAL RESULTS

AUGUST 2006

1.0 SUMMARY

Ghana has more than a century history of mechanized gold mining, however, in the last two decades, global innovations in the mining sector particularly the evolution of modern exploration and processing techniques have enabled the discovery and exploitation of near surface low grade material which hitherto was regarded as waste. This has resulted in an increase number of acquisition of exploration properties and mineral projects in Ghana by both local and international organizations.

NORTH WEST RESOURCES LIMITED is one of such local organizations, which is keen in going into exploration and mining activities in the country. The company was granted a reconnaissance in July 2005. This report prepared by Geodita Resources (a reputable Ghanaian geological consulting firm) outlines exploration work carried out during the reconnaissance licence period.

Northwest Resources Limited (Northwest) on April 18th 2006, entered into a Purchase Agreement to sell its 100% interest in the Nyinahin mineral Licence LVB 8936/05 and Land Registry No. 1535/2005 to MIKITE GOLD RESOURCES LIMITED (Mikite).

The reconnaissance licence was converted into a two-year renewable Prospecting Licence (LVB 3857/08) on the 24th day of January 2008 by the Minister of Lands, Forestry and Mines.

Geodita Resources on behalf of Northwest Resources on April 21st 2008, submitted an application for the transfer of the Prospecting licence LVB 3857/08 from Northwest Resources to Mikite Gold Resources to the Minister of Lands, Forestry and Mines.

Concession situated 20km northeast of Bibiani and about 48km Southwest of Kumasi, is located between two geological gold belts, the Bibiani Belt to the west and the Asankrangwa Belt to east. The concession which covers an approximate area of 172 sq. km. has been reduced to 150 sq. km to conform to statutory requirements regarding the size for a Prospecting Licences by the Minerals Commission

To better understand the geology, mineralization potential and to establish target areas for detail exploration, a systematic exploration programme was initiated July 2005 after the licence has been granted. The work involving active stream sediment sampling and reconnaissance geological mapping was carried out by Geodita Resources Limited (A Ghanaian geological consulting firm), to cover the whole concession.

The goal was to delineate grounds within the concession that show economic potential for gold mineralization.

A total of 126 samples comprising 116 stream sediments and 10 grab samples were collected. The Stream sediment samples were analyzed for gold using 50g fire assay method at SGS laboratory at Tarkwa with a low-level detection limit of 2Auppb.

A probability plot of the sample results gave a threshold value of about 10Auppb. Histogram of the results suggests a single population density attributed to the main rock type in the area (Birimian metasediments).

About 23.3% of the total stream sediment samples collected returned gold values above the threshold value of 10Auppb (probability plot and histogram), with 3.6% having values above 50Auppb. The maximum value being 228 Auppb at a point with GPS co-ordinate 596362 mE, 723188 mN. Other values include 46Auppb, 62Auppb, 66Auppb, and 76Auppb.

Three anomalous target zones namely Owusukurom, Ntoboroso, and Krakyekurom within the Birimian metasediments have been delineated for further work.

Interpretation of results suggests that the mineralization appears to be associated with NNE to NE structures. A shear zone located at a point with GPS coordinates 605767mE, 720762mN, appear to have resulted from the intersection of ENE-WSW trans-regional shear system and NNE-SSW strongly developed shear corridor.

Mineralized trends delineated, appear to run parallel to NE-SW regional sutures observed to be associated with gold mineralization within the Birimian terrains.

The result of the survey indicates that the Nyinahin concession has good exploration potential and a significant potential for lode gold mineralization within a favourable geological terrain

Potential for alluvial gold also exist along the Offin River within the concession. The Bonte Alluvial Mines, mining the Gyeni River (tributary of the Offin) is located to the east of the concession

It is therefore recommended that soil geochemistry and trenching coupled with ground geophysics be carried out to properly define the mineral potential of the delineated zones. It is further recommended that the alluvial potential within the concession be investigated.

2.0 BACKGROUND INFORMATION

2.1 Introduction

There is little doubt that exploration geochemistry has been the primary and certainly most successful exploration technique used in Ghana during the recent exploration boom and its effectiveness was proven over many decades by the Geological Survey. For a regional exploration program, stream sediment geochemistry can be a very cost effective means to outline general areas of interest, which may deserve follow-up work. This method of exploration has led to the discovery and exploitation of valuable in-situ mineral occurrences.

Geodita Resources, consulting for North West Resources limited has applied this method on their Nyinahin concession with the primary objective of delineating potential target zones for further exploration work.

2.2 Terms of Reference

The Terms of Reference as set out by North West Resources was for Geodita to carry out stream sediment sampling and preliminary geological mapping on the Nyinahin concession.

2.3 Purpose of Report

The report aims at bringing to light the economic gold potential of the property. This will then form the basis for formulating strategy for follow up work.

2.4 Source of Information/Data

The report is based on fieldwork carried out by Geodita on the concession. Other sources include bulletins published by the Ghana Geological Survey Department.

3.0 PROPERTY DESCRIPTION AND LOCATION

3.1 Location & Access

About 80% of the proposed Nyinahin Concession lies to the west of the Offin River within the Ashanti Region of Ghana (Fig 1). It falls under the jurisdiction of the Atwima Mponua District Assembly with headquarters at Nyinahin. The area lies within portions of Survey of Ghana 1: 50,000 scale series Topography Maps – Sheets 0603D2 & 0603B4. The concession has the following boundary co-ordinates:

Table 1 - Pillar Co-ordinates

Point	Latitude			Longitude		
P1	6 °	39'	08"	2 °	06'	52"
P2	6 °	39'	08"	2 °	06'	00"
P3	6 °	33'	24"	2 °	06'	00"
P4	6 °	33'	24"	2 °	05'	00"
P5	6 °	32'	38"	2 °	05'	00"
P6	6 °	33'	20"	2 °	01'	10"
P7	6 °	31'	36"	2 °	02'	15"
P8	6 °	30'	45"	2 °	01'	00"
P9	6 °	29'	15"	2 °	01'	00"
P10	6 °	28'	50"	2 °	03'	00"
P11	6 °	29'	50"	2 °	04'	11"
P12	6 °	29'	50"	2 °	09'	34"
P13	6 °	32'	45"	2 °	11'	28"
P14	6 °	32'	48"	2 °	10'	09"
P15	6 °	36'	24"	2 °	10'	09"
P16	6 °	36'	34"	2 °	09'	25"
P17	6 °	37'	43"	2 °	08'	17"
P18	6 °	37'	43"	2 °	08'	02"

The reconnaissance licence covers an approximate total area of 172 km². Access to the concession is by the main Kumasi – Bibiani trunk road. It is located about 48km southwest of Kumasi and about 20km northeast of Bibiani. Access within the concession is generally by unsealed roads and tracks which can be used by a 4x4 wheel drive vehicle.

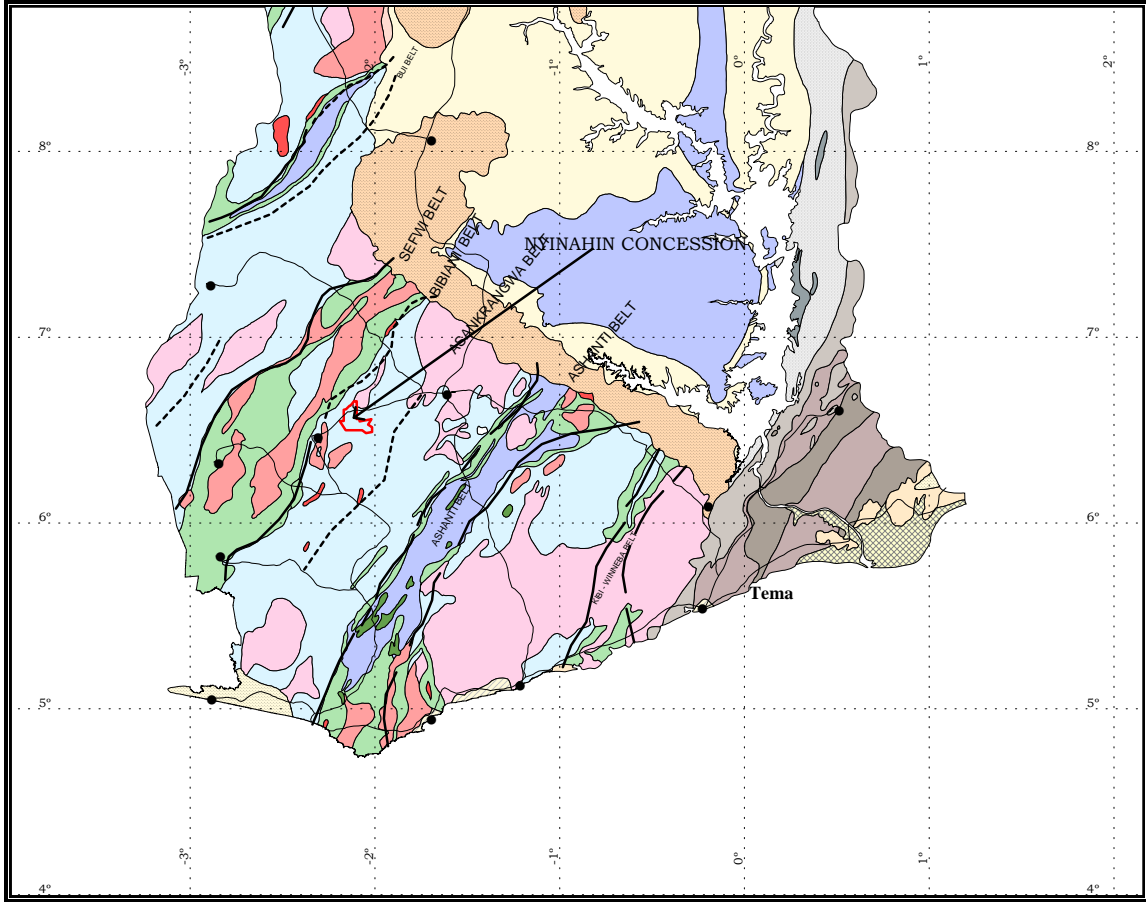


Fig1.
 Geology of Ghana showing Nyinahin Concession Location -Red polygon
 (After Luebe and Hirdes, 1986)

3.2 Relief and Drainage

The concession is generally characterised by low to gently undulating hills. The topography is thus moderate with elevations rarely above 220 m above mean sea level.

A sub-dendritic drainage system is exhibited in the area by tributaries of the Offin River. The Offin River located to the east of the concession, flows generally from north through south of the concession, hence most of the tributaries flows eastwards through the concession.

3.3 Climate, Vegetation and Infrastructure

The concession area falls within the wet semi-equatorial climatic region of Ghana (Dickson and Benneh, 1988). This region has two rainfall maxima, with a mean annual rainfall of about 200 cm. The first rainy season lasts from May to June, and the second one from September to October. Relative humidity is normally around 75%. Mean minimum and maximum temperatures are 18°C and 30°C respectively, while the average annual temperature is about 24°C.

With respect to vegetation, the area is covered mainly by secondary re-growth, which is subjected to shifting cultivation. There are also patches of secondary rain forest usually over the higher elevations.

Infrastructural facilities such as hospitals, schools, police station and telecommunications are available. Electricity is supplied from the National Grid.

Some of the notable towns within the concession include: Nyinahin, Akorabuokurom, Baaneekurom, Nagore and Ntoboroso

4.0 REGIONAL GEOLOGY AND GOLD MINERALIZATION

Geologically, the concession is located between two geological gold belts. The Asankrangwa – Manso Nkwanta belt to the east and Bibiani belt to the west.

4.1 Regional Geology

Ghana lies within the eastern domain of the Man Shield, which occupies the southernmost third of the West African Craton (Hirdes, et al., 1993, p16). It is largely composed of folded and metamorphosed rocks of early Proterozoic age that were intruded by granitoids during the Eburnean Orogeny. Clastic Sedimentary rocks of the Tarkwaian Group also occur and are believed to represent erosional deposits of earlier Birimian rocks.

4.2 Regional Mineralization

Mineralization in Ghana can be divided into two environments based on spatial association. The first environment lies close to boundary faults that separate greenstone belts from basinal sediment; the second is found within the intrabasinal assemblage. The age of mineralization is not known. However, lithologic and structural associations strongly suggest that mineralization is late-stage and is associated with the wrench faults along the basin margins. Remobilization of existing gold or polyphase introduction is not precluded. Mineralization in the basins shows a temporal relationship to granitic plutons controlled along the major intrabasinal shears. The regional mineralization can be classified into those associated with Boundary Fault and those associated with Intrabasinal Environments.

4.2.1 Boundary Faults Association

For over a century, mineralization associated with belt-basin faults was for both local prospectors and foreign exploration companies a primary exploration target due to the presence of coarse, visible gold. Deposits of this type in Ghana include Obuasi, Prestea, Bogosu, Konongo and Bibiani.

4.2.2 Intrabasinal Environment

Although mineralization associated with intrabasinal sediments has received less exploration attention, the significant of these deposits is now being recognised. The Kumasi basin, southeast of the Sefwi-Bibiani Belt best represents this style of mineralization, which is also encountered in the Sunyani basin north of the Sefwi-Bibiani Belt. Two different associations are recognised in this style of mineralization. These are Sedimentary Association and Intrabasinal Granitoid Association

4.3 Geology of the Belts

4.3.1 Asankrangwa Belt

Geology

Birimian metasediments are the predominant rock type in the belt. The lower group consists of an arenaceous formation of purple to violet or dark grey greywacke with intercalation of purple siltstone and thin layers of phyllite and an argillaceous formation of grey to black phyllite, laminated phyllite (white laminations), slate with beds of white to light grey or (rarely) purple siltstone.

The upper group consists of flysch-like cyclic interbedding of arenaceous and argillaceous units.

The Birimian metavolcanics outcrops near the boundary with the Bibiani belt on the west. The dominant intrusive body is a granite complex of the Cape Coast type, consisting of coarse and medium-grained adamellite and granodiorite. Most of the smaller intrusive bodies, located in the central part of the belt, are offset by E-W transverse wrench faults. Dixcove type granites and porphyries are located mainly in shear zones between Birimian metavolcanics and metasediments.

Gold Occurrences and Mineralization

Gold occurrences are closely associated with the porphyry and granite intrusive of the Dixcove type. Ore bodies, in the form of quartz reefs, ranging in thickness from 0.3 to 10.0m and ranging in grade up to 15g/ton, occur in close proximity to granite of the Dixcove type. They are generally narrower, less persistent, and of lower average grade than similar reefs in the Axim-Konongo belt.

Most of the larger quartz reefs are found in the anticlinal crests of tight NE-SW folds, which are all within the Kumasi anticlinorium, the main structural unit of the belt.

Exploration targets

Three types of exploration target occur within the Asankrangwa-Manso Nkwanta belt.

- Quartz reefs in phyllites and greywackes in close proximity to hornblende granitic intrusions.
- Quartz reefs in shear zones within phyllites (As observed on the Nyinahin Concession) and greenstones.
- Quartz veins and lenses within and around Dixcove type quartz porphyry intrusive.

A number of individual prospects have been identified including Mpasetia, Miradani, Kotanso, Mpasem and Adiadi.

4.3.2 Bibiani Belt.

Geology

The Bibiani range is composed of volcanic and pyroclastic rocks with many large and small intrusions of epidiorite, hornblende-granite, and quartz-porphyry. The rocks of the Bibiani gold belt consist of Birimian metasediments and metavolcanics, sediments (which probably belong to the Tarkwaian system) and granitic intrusions.

The western part of the range is made up of greenstones and amphibolites with pink hornblende-granite in most places. North of Bibiani the range becomes a narrow band of sheared hornblende rock ranging in composition from hornblende-schist to hornblende-granite and quartz-porphyry with highly sheared basic dykes. On the eastern flank of the range there are Birimian metasediments and metavolcanite, between which are unit of conglomerates and arenaceous sediments. The granites on the eastern side of the range are predominantly the biotite-muscovite type.

The conglomerate is bedded in a series of carbonate-spotted feldspathic and green arenaceous quartzites and grits, some of which contain numerous pebbles of quartz and sheared porphyry. The arenaceous units (sandstones, quartzites, greywackes, tuffs, breccias and conglomerates) that occur at intervals along the eastern flank of the range are considered to be Tarkwaian.

The Birimian metasediments near the greenstone-schist contact strike NE parallel to the contact, with dips varying from 70° NW to vertical. In the Enchi district the strike of the metasediments is parallel to the greenstone-schist boundary for many kilometers except around the intrusive contacts. Dips are generally high. In the Sefwi-Bekwai area the strike is northeasterly, while at Bibiani the strikes are variable.

Gold Occurrences and Mineralization

In general, most of the gold occurs along the eastern margin of a long synclinal belt of Birimian greenstones, which now form the Bibiani range. There are four modes of gold mineralization: vein and lode-type deposits, oxidized ores, veins and stockworks in granite porphyries, and recent placer deposits.

Exploration target

In the Bibiani belt, exploration efforts should be directed to areas including:

- Fault zones within the Birimian metavolcanics and metasediments.
- Intrusive contacts between the metavolcanics and hornblende granites and porphyries on the western side of the Bibiani range. These are zones of mineralization and sometimes appear as fault zones (lineaments).
- There are a number of abandoned mines and prospects in the belt. These include Bibiani, Bibiani North, and Bibiani South mines (now being mined by AGC). Other abandoned mines are at Sewum, Tokosea, and Ntubia. Some of these abandoned mines have now been reactivated and are in operation.
- Besides the abandoned mines, there are various other prospects in the Bibiani belt, Dumonta, Akwantambra, Bonaso, Dadiaso, Bodade, Nkwanta, Edukrom, Achimfu, Abontiakoom, Niawa (Nkrikom), Wasempeh, Sumiakrom, Disuanu, Chine, Chichiwere, Surosu, Kenyasi I and II (Now being developed by Newmont), Ankaso, Mpowum, Bepaiyasi, Anwiem, Mamnao, Kukuom Asikasu, and Subriso. Some of these abandoned prospects are also being developed by other companies.

4.4 Structures

Regional deformation comprises the main compressive tectonic stage that has resulted in folding, reverse faulting and regional foliation dipping about 70° to the southeast. Regional metamorphism is characterized by greenschist facies. Gold mineralization has been known to be associated with these regional structures. A shear zone, about 10m, has been observed striking 060° on the concession. This is located at a point with GPS coordinate 605767mE, 720762mN. Series of quartz vein ranging from 2cm to about 30cm were observed within this zone, the country rock being graphitic phyllite. This shear appears to have resulted from the intersection of ENE-WSW trans-regional shear system and NNE-SSW strongly developed shear corridor (fig 2).

4.5 Local Geology

The local geology of the concession is largely inferred from the regional reconnaissance geological map carried out by the Ghana Geological Survey department. Detailed geological mapping carried out by various exploration companies and individuals in the area coupled with current field work indicated the area to be underlain by north-eastern trending Birimian metasedimentary rocks intruded predominantly by biotite rich-granites of the Cape Coast Suite. Dixcove granitic plutons occur centrally and to the southeast of the concession (fig 3). The Birimian rocks are isoclinally folded with dips generally greater than 60 degrees. The general trend of these folds is northeast. Northeast trending fault zones are characteristic of the region as is elsewhere in the Birimian. Gold mineralization is commonly associated with these fault zones (lineaments), which are useful exploration targets.

5.0 EXPLORATION HISTORY

Evidence of past exploration and mining activities exist in the form of pits and adits. There is a strong clustering of artisan pits located along the Offin River. Three old gold prospects exist on the concession. The first, located about 2.0 km SE of the village Akorabuokurom and 3km from the village of Otaakurom. The second is located some 1.8km SW of the village of Ntoboroso to the east of the concession, whilst the third one is located along the southeastern boundary near the village of Owuokurom. Fragments of phyllite, greywacke and quartz are noted in the spoils from these pits. Due to time constrain, none of these old prospects could be located.

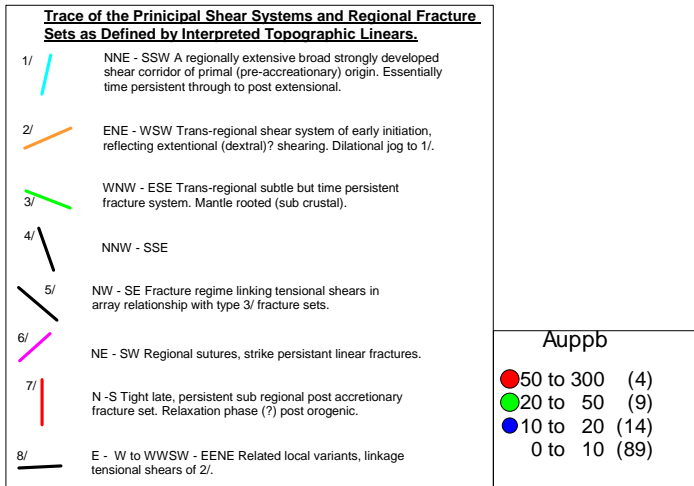
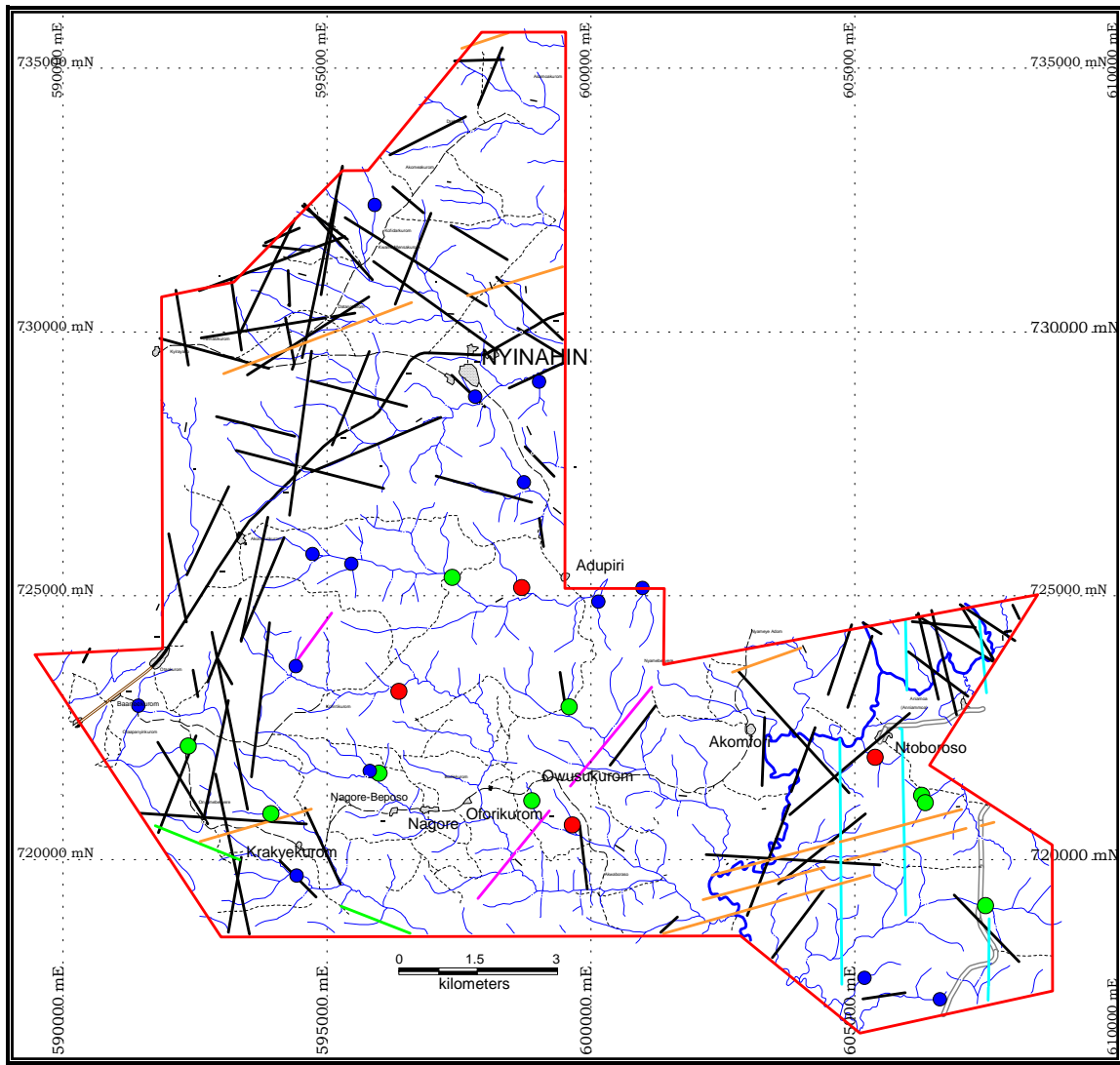
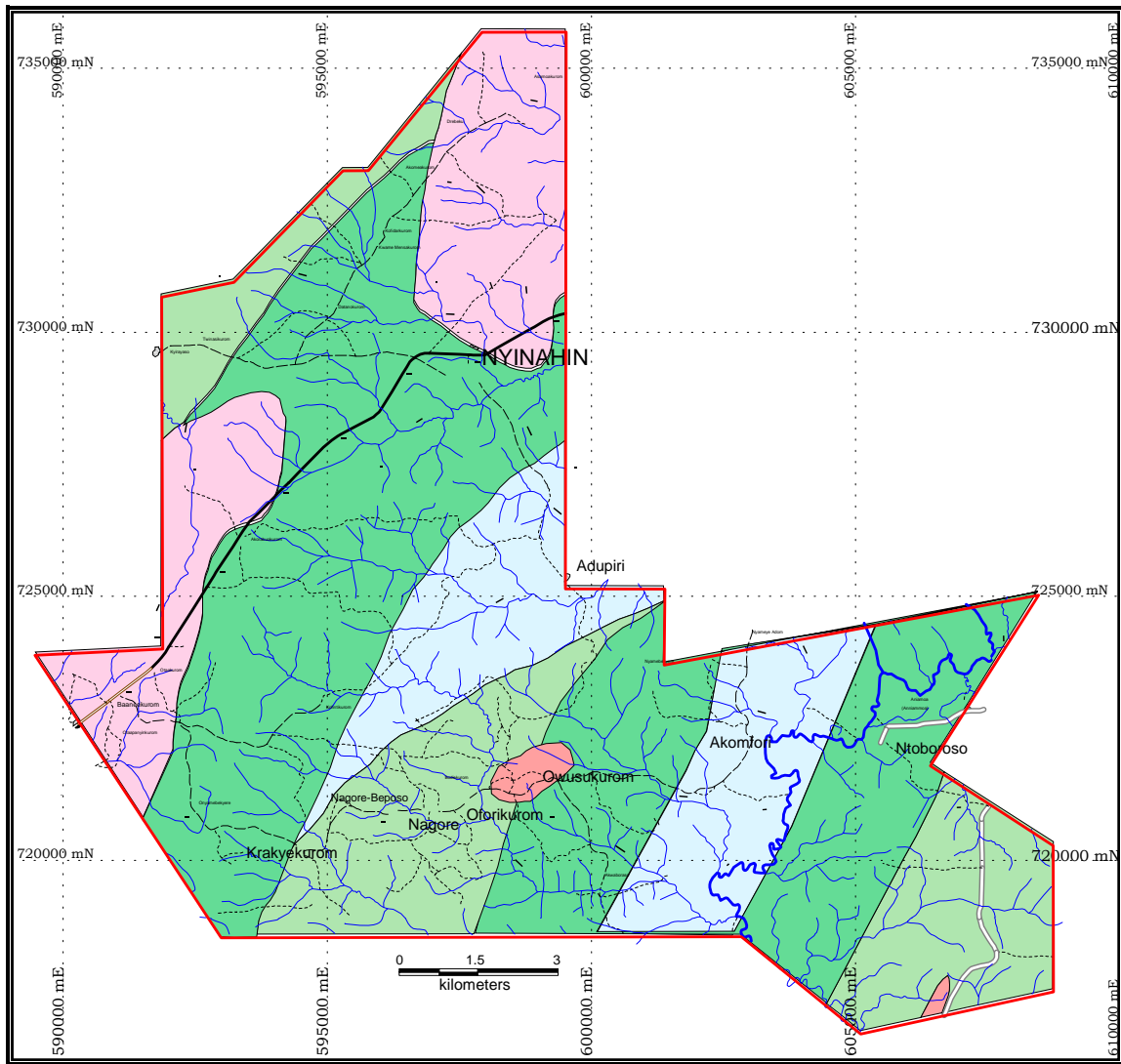


Fig. 2: Nyinahin Concession-Structural Map



INTRUSIVES

- Hornblende - rich igneous rock
DIXCOVE - Granitic Complex
- Biotite-quartz-rich igneous rock
CAPE COAST - Granitic Complex

BIRIMIAN METASEDIMENTS

- Arenaceous Formation
- Argillaceous formation
- Clasto-tuffaceous Formation

Fig. 3: Nyinahin Concession-Geological Map

6.0 METAMORPHIC FACIES

The degree of weathering of the metasedimentary rocks prohibits an accurate determination of a metamorphic facies. The metamorphic effects were slight. Foliation, transpositional layering and metamorphic overgrowths are rare or absent. Chlorites and sericites appear to be the only truly metamorphic minerals in the rocks, suggesting a low P/T assemblage such as in the lower greenschist facies or below.

7.0 DEPOSIT TYPES

There are numerous forms in which gold occurs in the Birimian system of Ghana. Current field work coupled with other geological report suggest that the Nyinahin concession greatly point to mineralization related to shear system within metasedimentary environment as exhibited at the Bibiani mines of the Ashanti Goldfield Corporation Ltd. Other forms of mineralization include that exhibited on the Ntibia mines i.e. mineralization associated with granites within intrabasinal environments. The structures on the concession have resemblance to intrabasinal faults represented by the Asankrangwa Fault in the Kumasi basin and the Yamfo trend in the Sunyani basin.

8.0 CURRENT EXPLORATION

8.1 Stream Sediments

Stream sediment sampling was carried out to cover the whole concession. Conventional stream sediment samples (fig. 4) were collected from mostly 1st and 2nd order streams.

The main objective of the programme was to identify gold-anomalous areas for further work. The sampling was done at a density of 2 samples per square kilometre. A total of 116 stream sediment samples were collected. Pan Concentrate sampling was carried out at some few places.

8.2 Geological Mapping

Geological mapping was carried out along side the stream sediment sampling. At each sample location, geological observations were made and the co-ordinate determined using the GPS. A total of 10 grab samples including quartz veins (Photo 1) were taken. The outcrops, together with other geological information based on previous work enabled a geological map as in figure 3 above, to be produced. Most of the outcrops encountered are graphitic Phyllite.

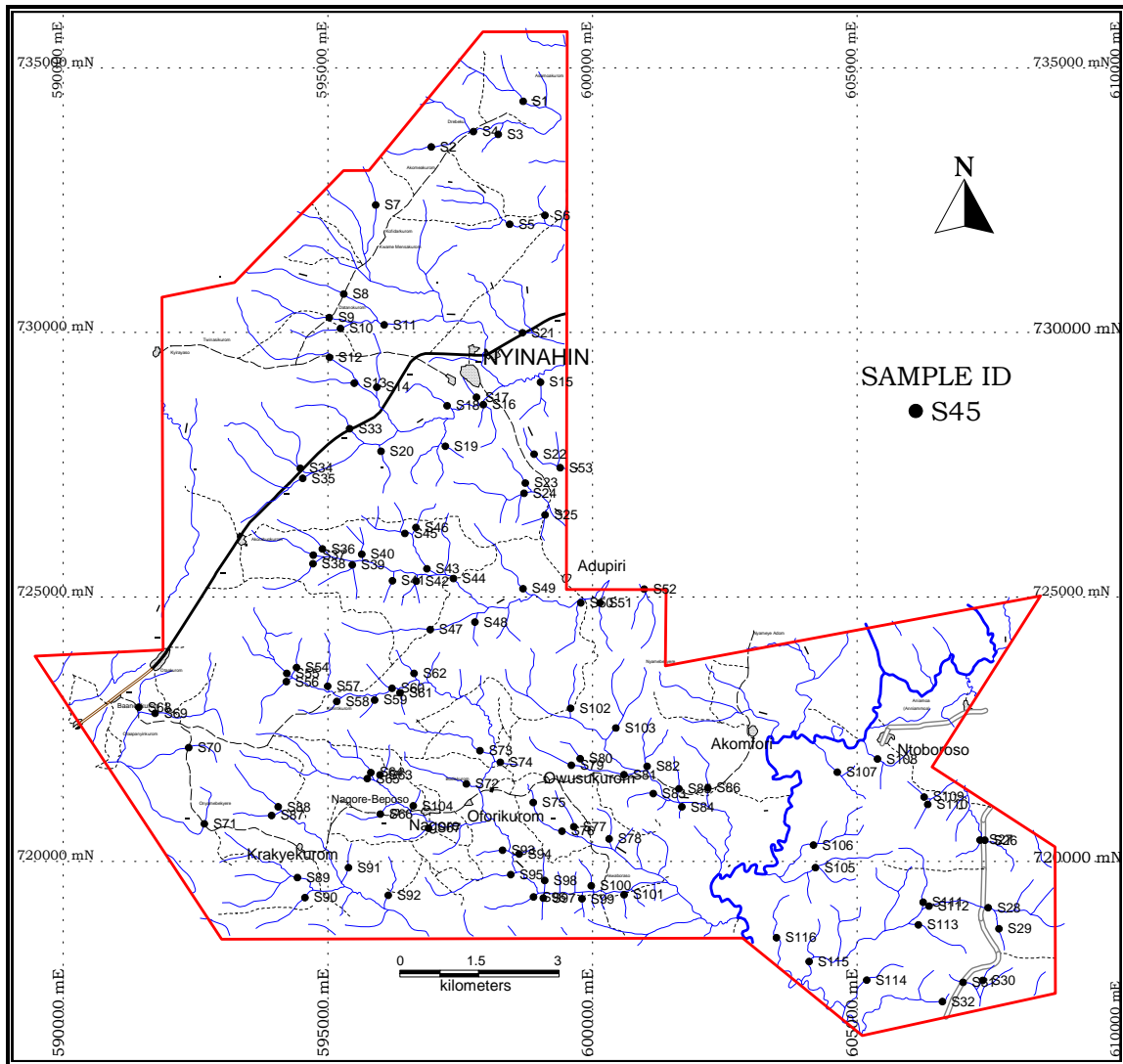


Fig. 4: Nyinahin concession – Sample Location



Photo 1: 20cm Milky glassy quartz vein in road cutting

8.3 GPS Readings

GPS reading using a Garmin 12XL standardised with the Universal Transverse Mercator Zone 30, Northern Hemisphere (WGS84), was used to obtain co-ordinates for each sample point.

Table 2 - Summary of work done to date

Mapping	
Geological Mapping sq. km	172
Sampling	
Soil Samples	-
Stream Sediment samples	116
Trench/Pit Samples	
Grab samples taken	10
Anthill	-
Total	126
Assay	
Assay Low Level (stream)	116
Routine Analysis (grab)	3

9.0 SAMPLING METHOD AND APPROACH

9.1 Stream Sediments

A correctly collected stream sediment sample represents the natural mineral composition of the entire catchment area upstream from the sample location and for this reason, the technique is a powerful and rapid method of mineral exploration.

The stream sediment samples were collected from 1st and 2nd order streams in the area. Most of the streams in the area were dry during the sampling period. A topographic sheet of scale 1:50,000 with pre-selected sample location points was used as a base map for the field.

Each sample of about 2kg constituted composite from at least four sites across the stream bed, 10-15m on either side of the sampling point. Fine silt sediments were collected as much as possible, avoiding the organic material. Care was also taken to collect samples from up a tributary above the point of influence of water flow from the main stream.

Photograph 3 shows a geologist taking sample in the stream wearing protective gloves.



Photo 3: Geologist taking Stream sediment sample

Artificial traps (boulders, waterfalls & trees) were completely avoided as the exercise intends to avoid any coarse or nugget gold. However, advantage is taken of natural depositional environment where the energy of the stream is greatly reduced or zero like meanders where very fine particles are naturally deposited as a result of very low velocity. The samples were kept in a well-labelled polythene sample bags for easy and safe transportation. The sample sites were immediately indicated on the field map and the site on the field flagged with a red flag bearing the sample number.

Garmin 12 XL GPS was used to assist in locating the sample points. A total of 116 stream sediment samples were collected during the period. All data pertaining to the stream and sample characteristics, were recorded on a geochemical sample data log sheets (Appendix I)

9.2 Geological Mapping

At each stream sediment sample location, observations were made of the geology, in terms of the soil type and outcrop. Other geological features of interest were also noted.

10.0 SAMPLE PREPARATION, ANALYSIS AND SECURITY

All the samples were sent to SGS laboratory at Tarkwa. Laboratory preparation of each sample consisted of drying, crushing total sample in jaw crusher to -6mm, cone or roll crush to -2mm, mix split out 1kg and pulverise to -200mesh in ring mill. From which 50g sample is fluxed and fused in a furnace for 1hr. The lead button is cupelled and the pril digested in AR and the value determined by AAS with a low detection limit (code: -FA50L).

Prior to dispatch to the laboratory, all samples were checked to ensure that labels and seals are intact to avoid contamination and tampering. Care was also taken during sampling and handling to avoid the introduction of any foreign material that could give bias results.

11.0 ADJACENT PROPERTY

The Nyinahin concession shares boundary with several companies due to its shape. Gyata Exploration is located to the West. To the east is Napoli Gold Limited, whilst Ashanti-Akokeri, U & N Company and Dunkwa Continental Goldfields are located to the southeast.

Within the district, some 20km SW of the concession is the Ashanti Goldfields Bibiani Mines and 50km SE is the famous Ashanti Goldfields Obuasi Mines. The Kenyasi – Yamfo concessions belonging to Newmont Ghana Gold is also located some 45km NW of the concession (fig 5).

12.0 MINERALIZATION

A probability plot (Graph 1 & 2) of the sample results, coupled with the histogram (Graph 3), gave the threshold value of about 10Auppb. Statistics of results for the 116-stream sediment sample analyzed indicate that 23.3% of the samples are above the threshold value of 10 Auppb (Fig 6, table 3)

Table 3 - Statistics of gold Results

Au interval (ppb)		Frequency	Percentage
Range			
From	To<	No	%
0	10	89	76.7
10	20	14	12.0
20	50	9	7.7
50	100	3	2.9
	>100	1	0.7

The mineralization suggests a general NE - SW mineralised trends. Individual values include 46Auppb, 66Auppb, 76Auppb to a peak value of 228Auppb. The histogram also suggests a single population density attributed to the main rock type (Birimian metasediments) on the concession.

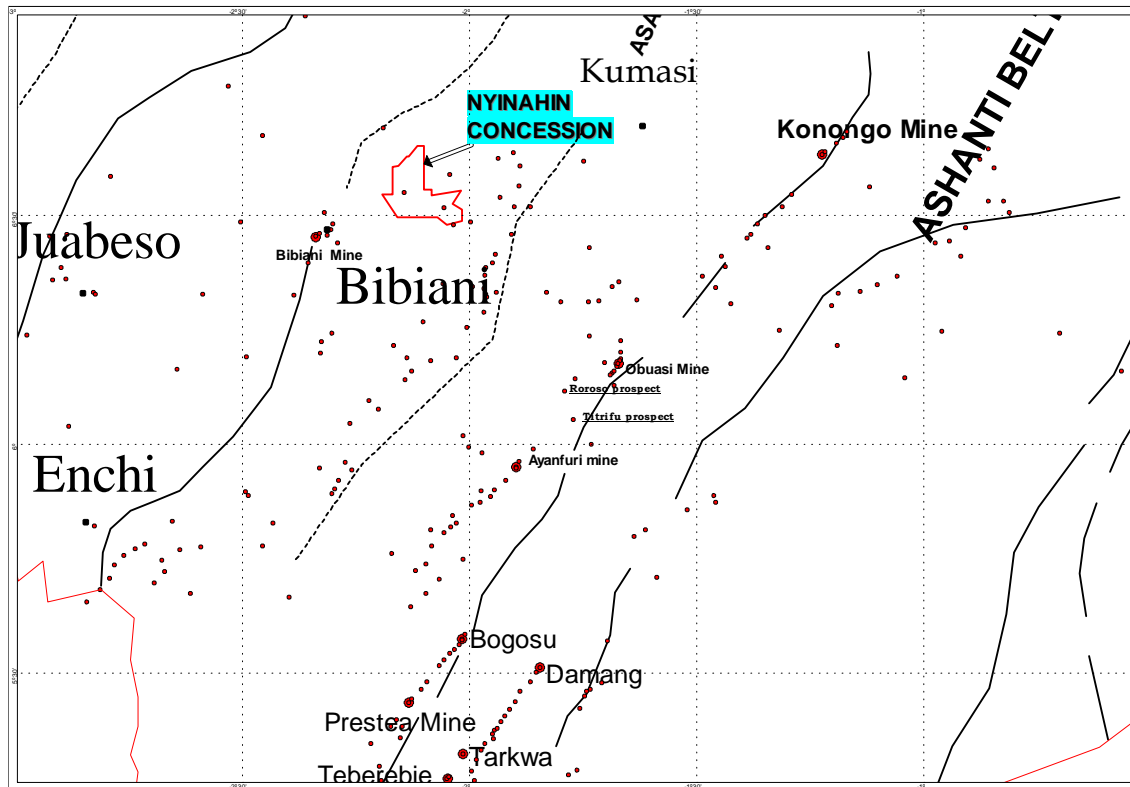
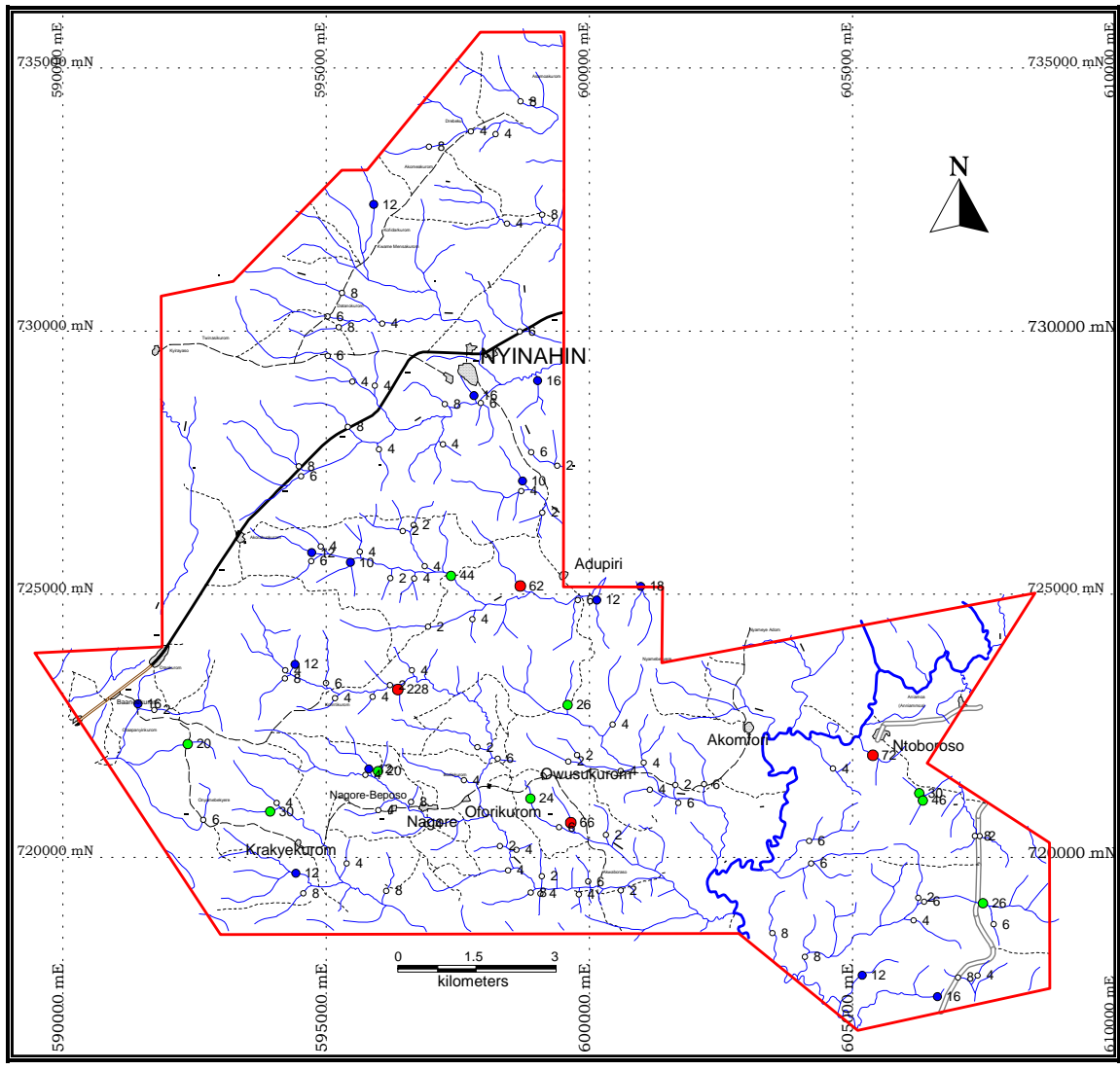
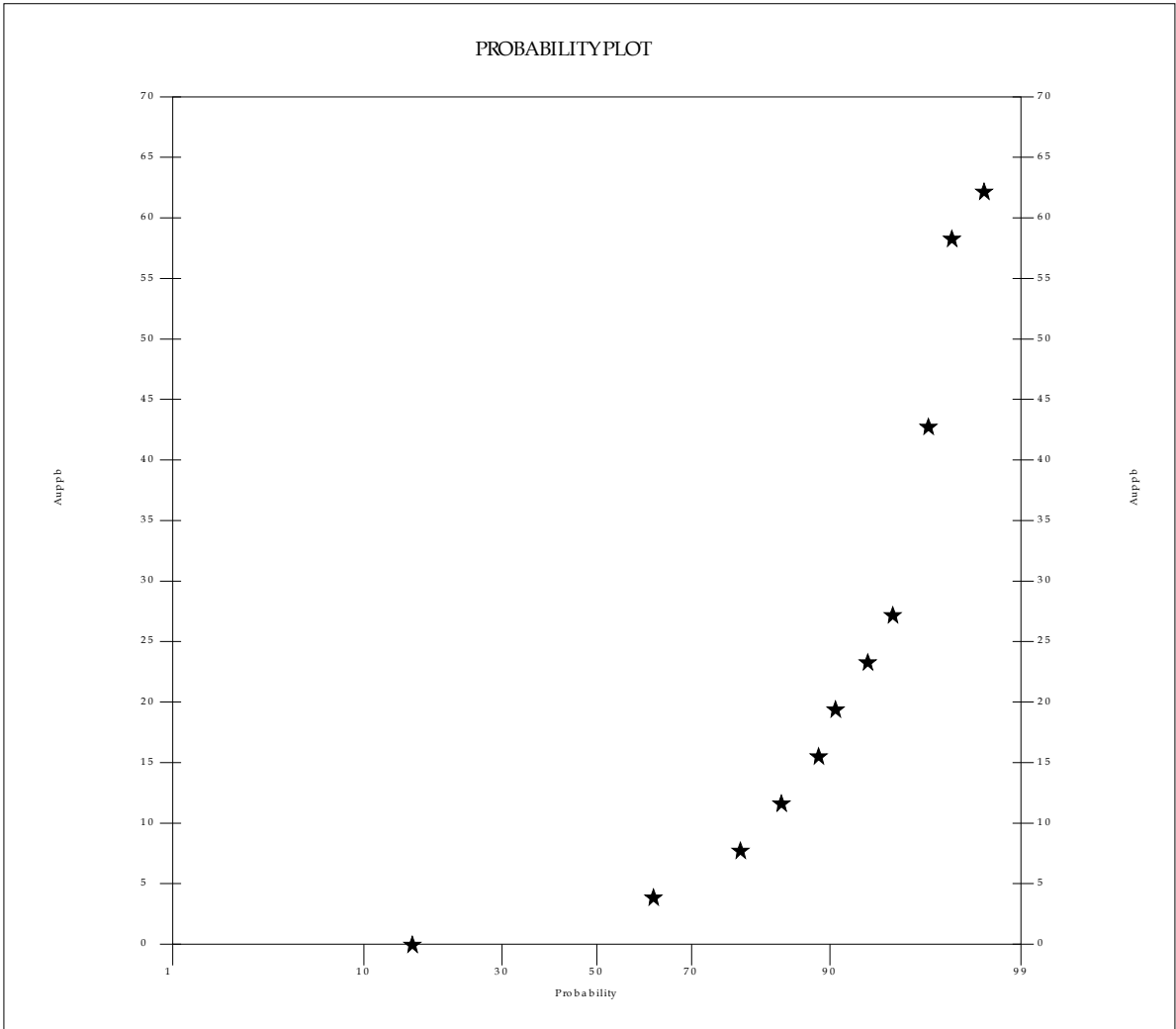


Fig. 5: Mine Sites and Gold Prospects showing Nyinahin Concession

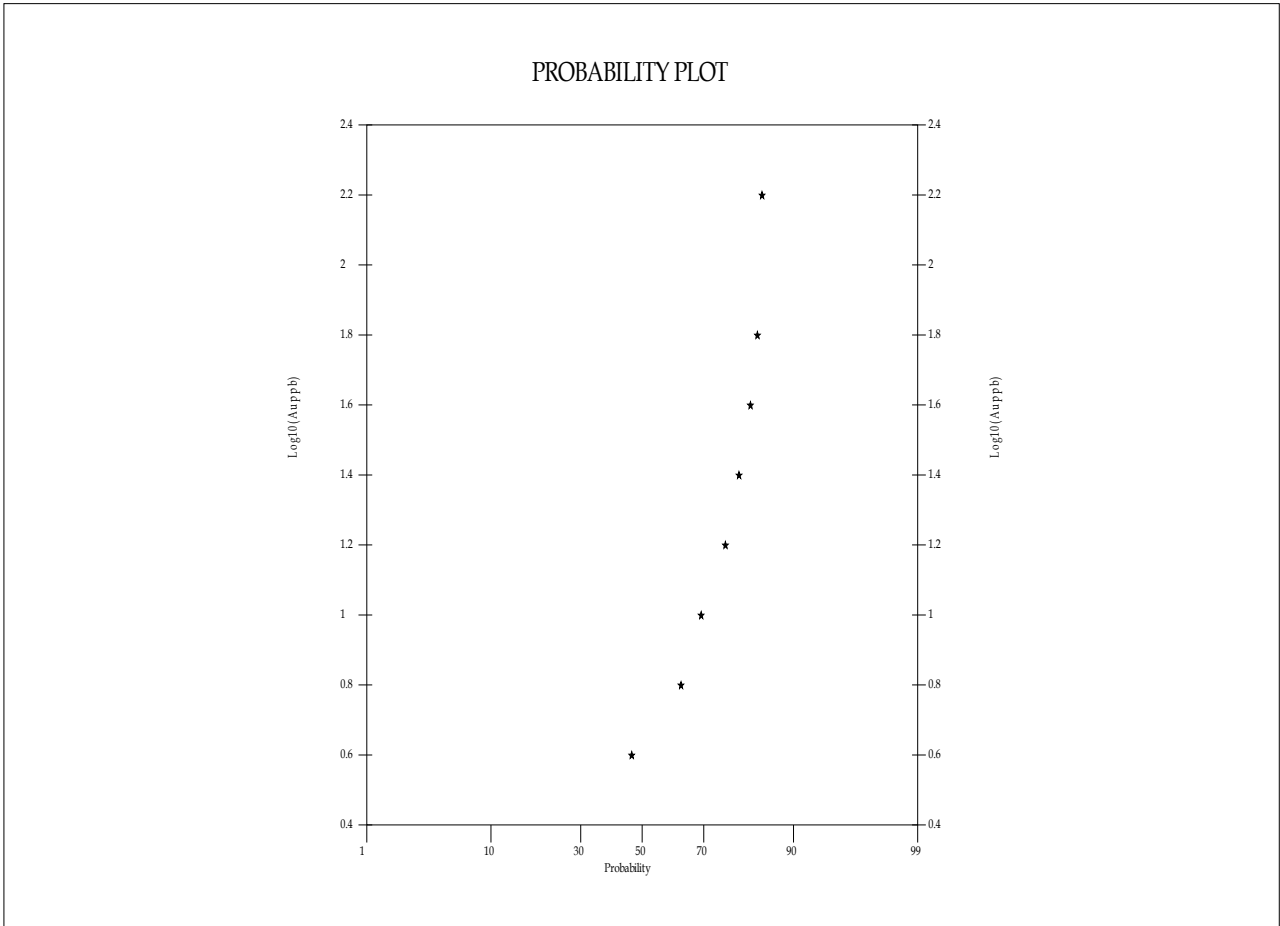


Auppb	
● 50 to 300	(4)
● 20 to 50	(9)
● 10 to 20	(14)
○ 0 to 10	(89)

Fig.6: Nyinahin Concession- Gold-in-Stream Sediments

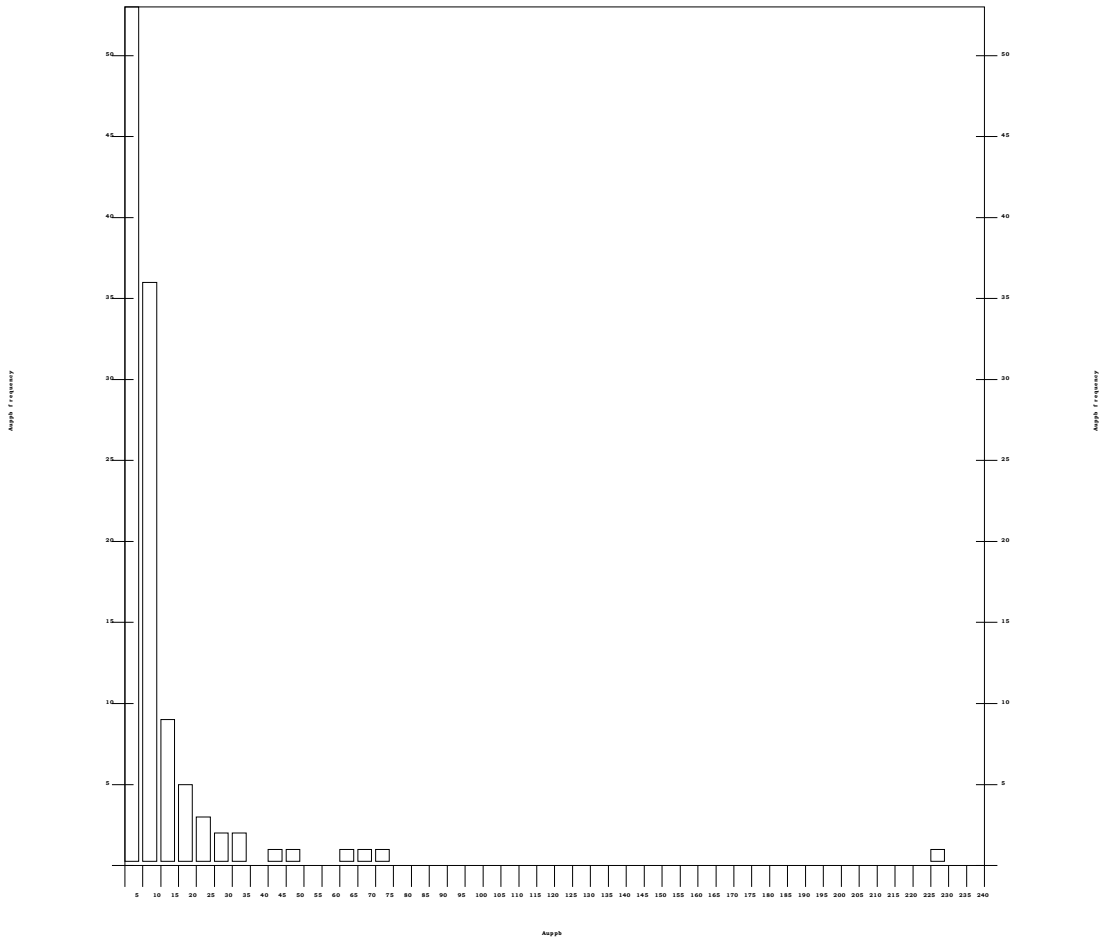


Graph 1. Probability Plot of sample results



Graph 2. Log Probability Plot of sample results

HISTOGRAM OF STREAM RESULTS



13.0 DISCUSSIONS AND INTERPRETATION

The essence of conventional stream sediment is to identify general areas of gold mineralization. The prime objective therefore is to be able to identify the geochemical signature. This has clearly been identified on the Nyinahin concession.

A study of over 170km of core and chip samples from the Kenyase-Yamfo mineralized zone have proved that a complex system of NE trending faults control most of the gold mineralization (Gold Deposits of Ghana, Griffis et al 2002). The Prospectivity of the Nyinahin concession, also containing similar NE structures can therefore be described as being very good (see fig 2).

The stream sediment survey conducted on the concession delineated three anomalous target zones (fig. 7). These are:

- Owusukurom anomaly = 10.0km X 7.5km
- Ntoboroso anomaly = 5.5km X 4.0km
- Krakyekurom anomaly = 5.0km X 3.0km

The above anomalies are within the Birimian metasediments

Four mineralized trends (fig. 8) have also been defined. These trends are generally oriented NNE to NE, running parallel to sub-parallel to regional structures associated with gold mineralization. These are:

- Krakyekurom – Adupiri = 12Auppb, 20Auppb, 30Auppb, 44Auppb, 62Auppb & 228Auppb
- Akwaboraso – Adupiri = 12Auppb, 18Auppb, 24Auppb, 26Auppb & 66Auppb
- Ntoboroso = 12Auppb, 30Auppb, 46Auppb & 72Auppb
- Baaneekurom – Nyinahin = 10Auppb, 12Auppb, 16Auppb, 18Auppb & 20Auppb

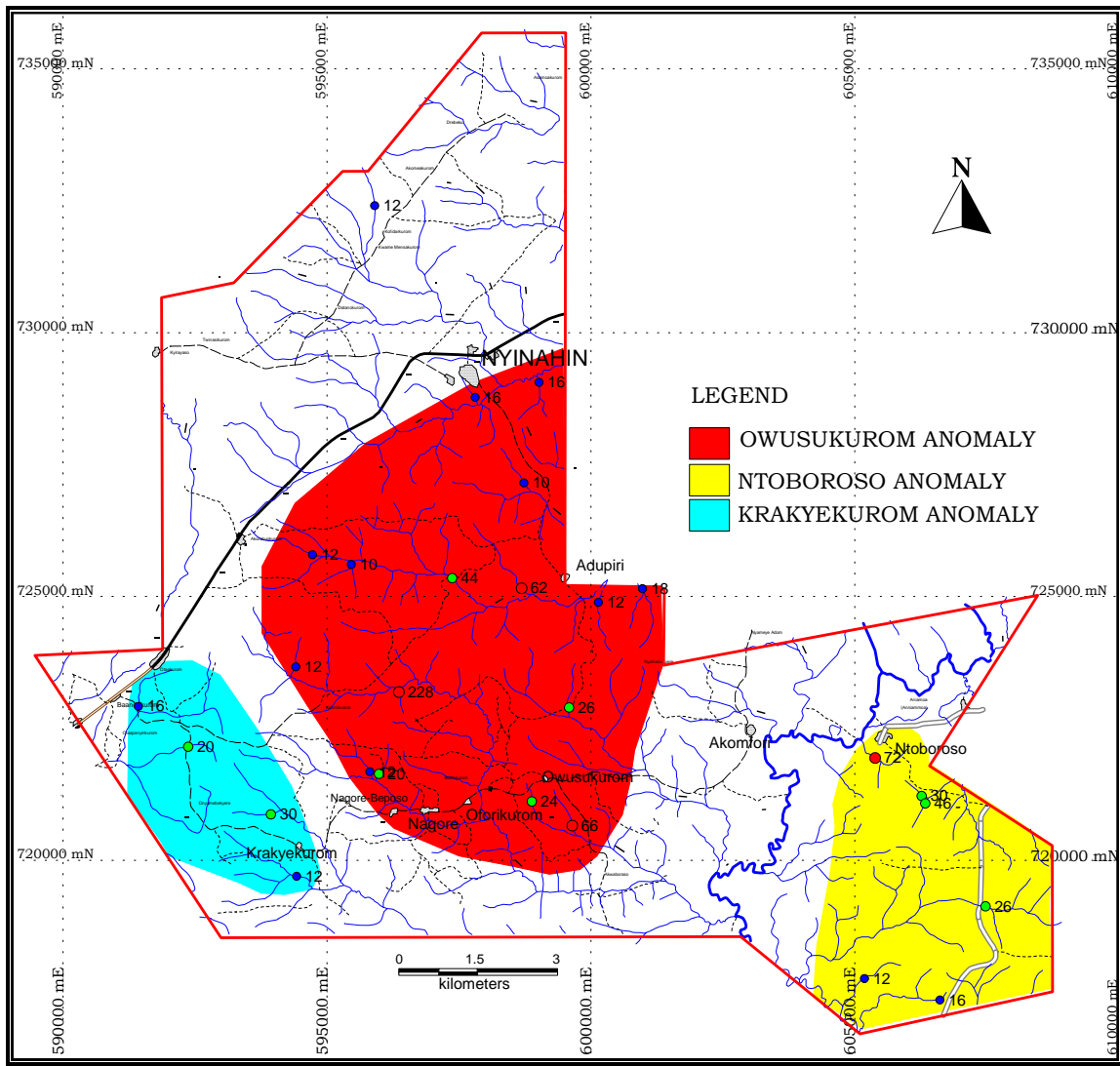


Fig. 7: Nyinahin Concession – Anomalous Zones

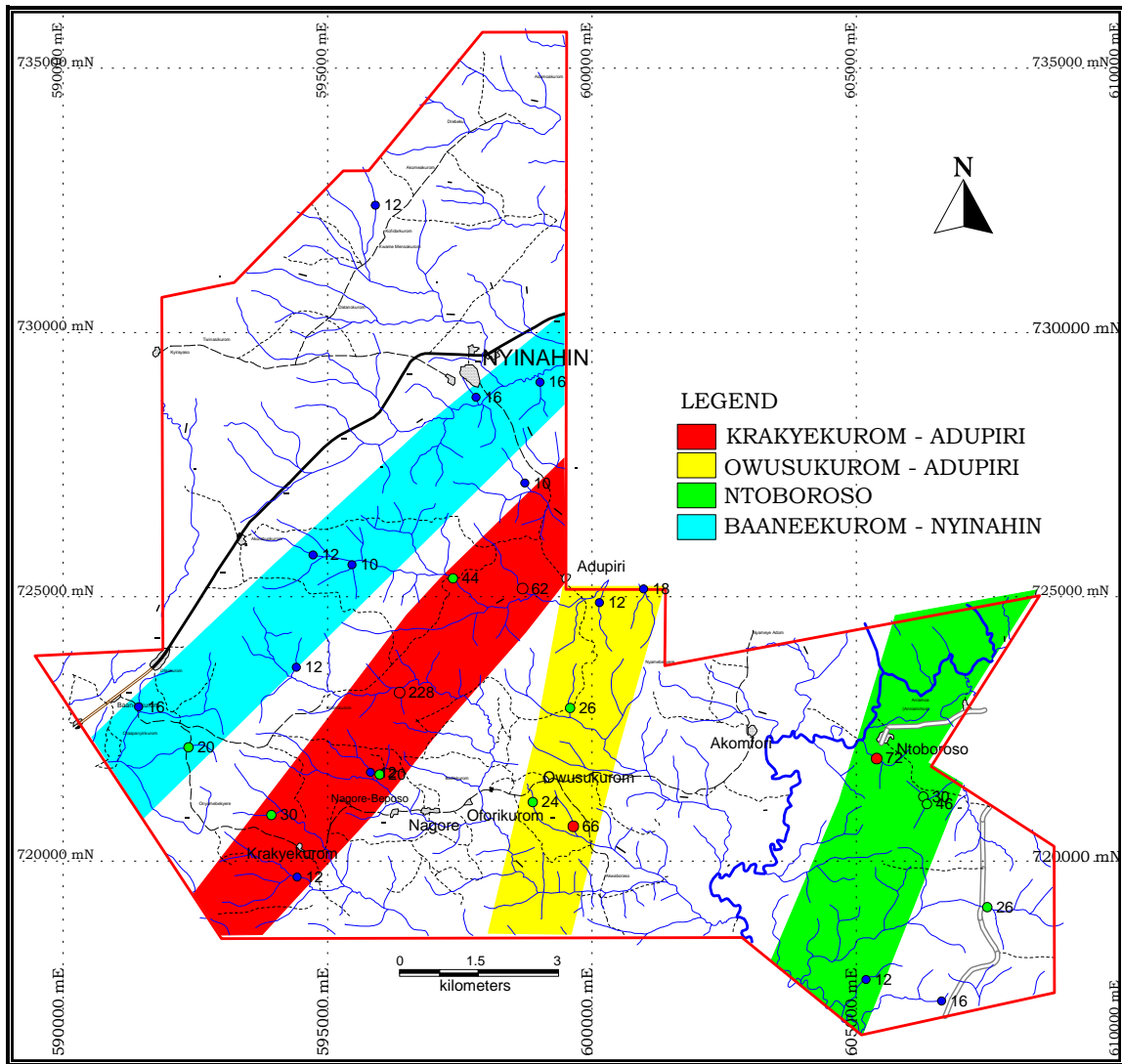


Fig. 8: Nyinahin Concession – Mineralized Trends

14.0 CONCLUSIONS AND RECOMMENDATIONS:

A geochemical signature has been clearly identified on the Nyinahin concession. The survey so far undertaken suggest that gold mineralization on the Nyinahin concession may be structurally controlled. The mineralized trends appear to run parallel to NNE to NE structures. Considering the above, Geodita therefore recommends a follow-up soil geochemistry and detailed geological mapping including petrographical analysis over the concession. Other exploration tools (ground magnetics) will be applied when necessary to properly define the gold mineralization on the concession. The alluvial potentials of the concession should also be investigated.

15.0 APPLICATION FOR THE CONVERSION OF RECONNAISSANCE LICENCE INTO A PROSPECTING LICENCE

15.1 Specification

Northwest Resources hereby applies for the conversion of the Nyinahin Reconnaissance License into a two (2) years renewable Prospecting License to allow for follow-up exploration (soil, trenching and drilling) to be undertaken.

The Licence application is for Gold, Diamond and Base metals, and covers an approximate area of 150sq. km.

The minimum expenditure commitment for the first two phases of the exploration programme is US\$ 100,000 as per the attached proposed Work Programme and Cost Estimate.

Figure 9 shows a Site plan “Conversion of Reconnaissance License to Prospecting License” of the areas under consideration. It is described as all that Land of area approximating 150 sq. km contained within the pink line commencing at point P1:

Table 4: Pillar Coordinates

Point	Latitude			Longitude		
P1	6 °	36'	15"	2 °	10'	09"
P2	6 °	36'	15"	2 °	06'	00"
P3	6 °	33'	24"	2 °	06'	00"
P4	6 °	33'	24"	2 °	05'	00"
P5	6 °	32'	38"	2 °	05'	00"
P6	6 °	33'	20"	2 °	01'	10"
P7	6 °	31'	36"	2 °	02'	15"
P8	6 °	30'	45"	2 °	01'	00"
P9	6 °	29'	15"	2 °	01'	00"
P10	6 °	28'	50"	2 °	03'	00"
P11	6 °	29'	50"	2 °	04'	11"
P12	6 °	29'	50"	2 °	09'	34"
P13	6 °	32'	30"	2 °	11'	15"
P14	6 °	32'	30"	2 °	10'	09"

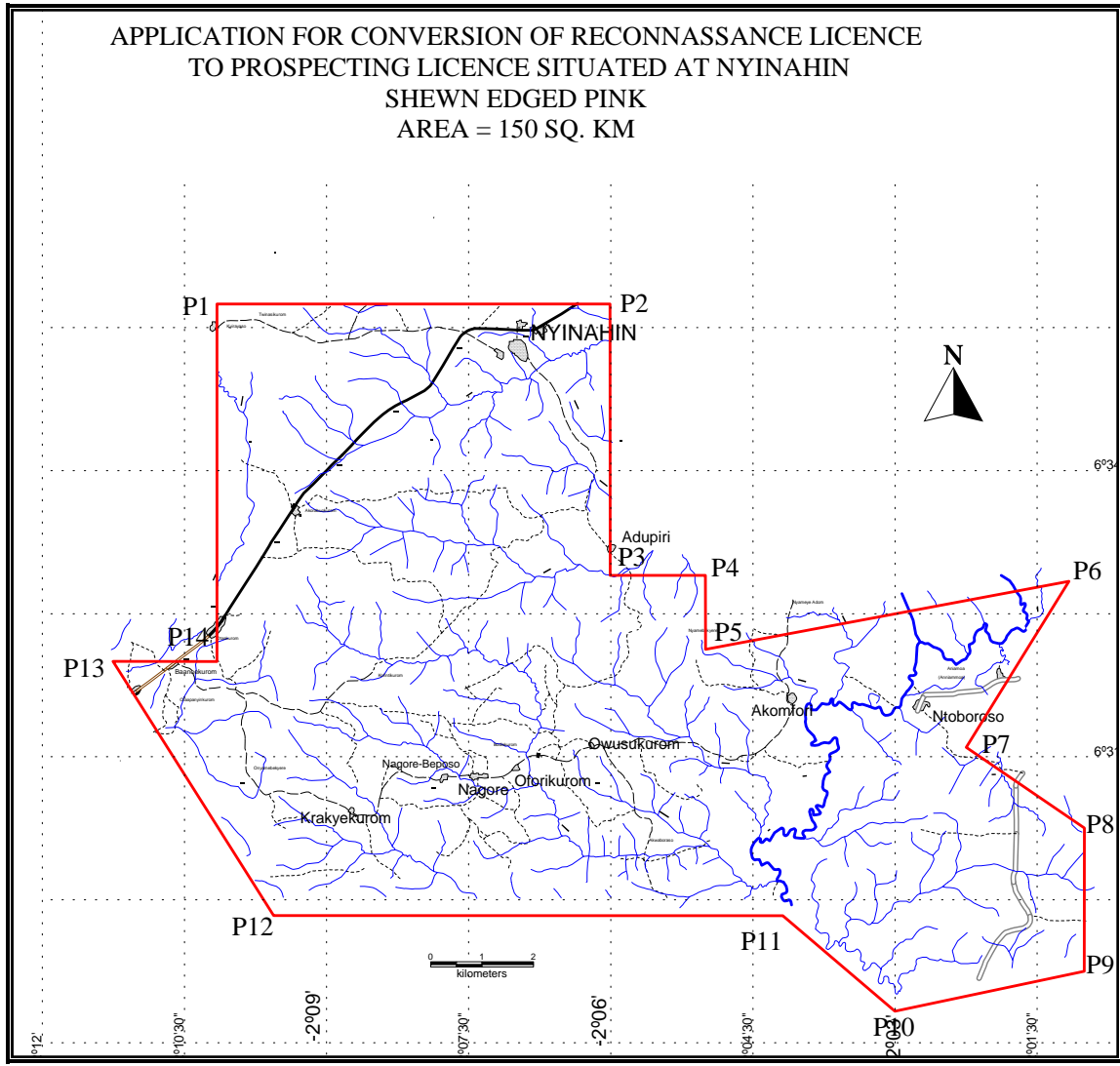


Fig. 9: Site Plan -Conversion of Reconnaissance licence to Prospecting Licence

15.2 Proposed Work Programme

Northwest Resources Limited has designed a four-phased exploration programme, with cost estimate for the License as detailed below:

The Company is committed in spending a total of US\$286,000 over a two year period depending on the type and size of any deposit to be discovered. This estimate includes a 10% contingency cost.

It is expected that upon granting of the license, phase one of the programme will start within one month.

Phases II and III is contingent upon a favourable results from earlier phases.

15.2.1 Phases I and II (Duration 12 months -end of first year)

Proposed Exploration

- ◆ Geological Mapping
 - ◆ Line Cutting
 - ◆ Geochemical Soil Sampling
 - ◆ Trenching
 - ◆ Pitting
 - ◆ Geophysical Investigation
-
- The Fieldwork will begin with preliminary geological mapping and documentation to confirm the general structures and formations. A review of work done during the reconnaissance licence period will also be carried out.
 - Line cutting will be carried out on known mineralized zones identified within the concession at initial grid spacing of 800m. This will be in-filled with lines spaced at 400m and 200m over selected grounds. It is expected that about 100km of lines will be cut in all.
 - Geochemical soil-sampling program will be conducted at an initial interval of 400 and in-filled at 100m and 50m along the grid lines.
 - Trenching, the most cost effective exploration method available in locating significant in-situ mineralization will be employed. Preliminary trenching based on results of the geochemical soil sampling will be carried out. An estimated 800m of trenches will be excavated.

- Pitting will be carried out at some soil location points along the proposed mineralized trend where trenching is not merited. Areas without significant gold values along the mineralized trend will also be pitted to check the possibility of transported materials.
- Geophysical methods (VLF-EM/SP) will be used to identify mineralized zones/anomalies within the concession area. Other work to be tackled are clarification of the general forms of the mineral deposits (or anomalies), the size of the main ore bodies, their quality, mineralogy and technical problems which will generally assist in the evaluation of the deposit.
- Finally, other geological works will be carried out if considered necessary. It is hoped that any geophysical work already conducted in the area by the Geological Survey will help in the interpretation of the structural problems. At the end of this phase, an internal report will be prepared. The report will form the basis of the Annual Report and on which the detailed prospecting phase will be projected and carried out as the next phase of the project.

15.2.2 Phase III (Duration up to 6 months - beginning of second year)

Detailed Prospecting

- ◆ Geochemical Investigations
 - ◆ Trenching and Pitting
 - ◆ Structural Geological Mapping
 - ◆ Assay
 - ◆ Survey work
- Geochemical samples will be taken along the geophysical traverses and analyzed to cross check any prospects/anomalies picked up by the geophysics. All the geochemical anomalies recorded will be “prioritized”.
 - Detailed soil sampling at a closer grid system of 200 X 50m, and 100 X 25m will be undertaken when it becomes necessary.
 - Trenching, pitting, sampling and structural geological mapping will be tightened up. Any other geological work deemed necessary would also be carried out.
 - Assaying of all samples will be carried out locally in the first instance. Some external cross checking of the assay values will also be made as and when appropriate.
 - Survey work –all work from this stage will be performed on a surveyed grid system. All trench locations from the previous phase and the subsequent ones will be surveyed and put on plan and sections. This will enable a more effective picture of the prospecting work to be viewed and interpreted.

- Mineralogical and petrographical studies will be carried out.
- A report will be prepared at the end of the period. This will involve project appraisal and projections for the next phase of the prospecting program.

Phase IV (Duration up to 6 months - end of second year)

Target Delineation and Resource Estimation

- ◆ Trenching, Pitting and Sampling
 - ◆ RC Drilling (1000m)
 - ◆ Other Detailed Geological Work
 - ◆ Geological Report.
- Work will be concentrated in areas, which have shown positive results during the previous phases and carried out according to the importance of the results. Area(s), which could be mined first, will be prospected in more detail. The aim will be to accurately define the geological structure, forms, attitude of the ore bodies or the ore deposit.
 - Trenching will continue at an aggressive rate and at closer grid spacing than before. Sampling, survey work and structural geological mapping of all exploration work will be carried out.
 - RC drilling of the gold deposit for resource estimation will be carried out. It is estimated that about 800m of RC drilling will be carried out.
 - Assay of all samples will be done locally and externally as and when necessary.
 - Resource Estimation based on trench and RC drilling will be carried out
 - Reserves estimation will be attempted at this stage to determine the extent of the economic mineral potential of the concession area.

16.0 COST ESTIMATES

16.1 First Year - Phases I & II

<u>ACTIVITY</u>	<u>US DOLLARS</u>
Gridding	1,500
Geological Mapping	2,000
Geophysical survey	5,000
Trenching and Pitting (600m)	10,500
Crop Compensation	2,000
Consultants and Contractors	10,000
Skilled and Unskilled Labour	8,000
Logistics and Equipments	8,000
Administration and Overhead	8,000
Vehicle	25,000
Fuel, Lubricant and Maintenance	5,000
Assaying: 1,500 samples	15,000
TOTAL	<u>100,000.00</u>

16.2 Second Year - Phases III & IV

<u>ACTIVITY</u>	<u>US DOLLARS</u>
Trenching: 1000m	15,000
RC drilling: 800m	40,000
Mob/demob	6,000
Earth-movements	5,000
Surveying	2,000
Crop Compensation	6,000
Consultants and Contractors	20,000
Skilled and Unskilled Labour	10,000
Logistics and Equipments	8,000
Administration and Overhead	10,000
Fuel, Lubricant and Maintenance	8,000
Assaying: 2,500 samples	30,000
TOTAL	<u>160,000.00</u>

16.3 Cost Summary (Two Years Operations)

PERIOD	US DOLLARS
First Year	100,000
Second Year	160,000
Total	260,000
10% contingency	26,000
Grand Total	286,000

17.0 ENVIRONMENTAL CONSIDERATION

The required Environmental Protection Agency and Exploration Permits will be acquired from the Environmental Protection Agency and the Mines Department respectively. All environmental liabilities to which the property is subjected will be clearly spelt out in the Permit License. It is the strongest determination of the Company to ensure that all environmental issues are properly dealt with at every stage of the exploration process.

The following measures will be adopted to reduce any environmental impact to the barest minimum.

- Tree cutting will be minimal.
- Access roads will be as narrow as possible.
- Destructions of farms will be avoided. Where destructions of farms became necessary, adequate compensations will be paid to farmers.
- Stream pollutions will be minimal to avoid contamination.

18.0 TIME SCHEDULE

Table 5

Year one		Year two	
Phase one (1 - 2 months)	Phase two (9 – 10 Months)	Phase three (6 Months)	Phase four (6 Months)
Literature Study & Review of work done during Reconnaissance period	Proposed Exploration	Detailed Prospecting	Target Delineation
Preparation and Reconnaissance Work	Geological and structural Mapping, Geochemical Soil, Trenching and Survey work	Geochemical Investigations Trenching and Pitting Assaying Geophysical investigation	Trenching, Pitting and Sampling RC Drilling (1000m) Other Detailed Geological Work Geological Report. Preliminary Resources estimation

19.0 ACTIVITY CHART

Table 6- Year one -12 months

ACTIVITY	MONTH											
	1	2	3	4	5	6	7	8	9	10	11	12
Review, Filed visit, Procurement of labour & logistics	X	X										
Geological Mapping			X									
Soil Geochemistry				X	X	X						
Trenching/Pitting						X	X					
Structural Mapping							X	X	X			
Assaying			X	X	X	X	X	X	X			
Report Writing										X	X	X

Table 7 - Year Two -12 months

ACTIVITY	MONTH											
	1	2	3	4	5	6	7	8	9	10	11	12
Soil Geochemistry	X	X	X									
Trenching/Pitting				X	X	X						
Geological mapping				X	X	X						
Surveying					X	X	X					
RC Drilling						X	X	X				
Resources Estimation							X	X	X	X		
Assaying			X	X	X	X	X	X	X	X		
Terminal Report Writing										X	X	X

20.0 REFERENCES

- | | | |
|--|------|---|
| Benneh, G. and Dickson K. | 1977 | A new Geography of Ghana |
| Junner, N. R. | 1934 | Gold in the Gold Coast |
| Geology Department (Legon) | | Gold Potentials of Ghana |
| Kesse G. O. | 1985 | The Minerals and Rock Resources of Ghana |
| Hirdes, W, et al., | 1993 | Explanatory Notes for the Geological Map of Southwestern Ghana |
| Griffis Consulting and Exploration Services | 1998 | Explanatory Note. Geological Interpretation of Geophysical Data from Southwestern Ghana |
| Griffis RJ, Barning K, Agezo F. L. and Akosah F. K | 2002 | Gold Deposits of Ghana |

NORTH WEST RESOURCES LIMITED

NYINAHIN CONCESSION

TERMINAL REPORT

APPENDIX I

STREAM SEDIMENT DATA LOG SHEET

AUGUST 2006

**NORTH WEST RESOURCES LIMITED
STREAM SEDIMENT SAMPLE LOG SHEET**

PROJECT: NYINAHIN

DATED: AUGUST 2006

SAMPLE NUMBER	UTM EAST	UTM NORTH	S T R E A M			S A M P L E				A S S A Y
			DIR (0)	NATURE	WIDTH(m)	MOIT	TEXTURE	HOR	COLOUR	Au. FINAL
1-6	7-12	13-18	19-21	22-23	24-25	26	27-30	31-32	33-36	
NSS001	598691	734367	150	ND	0.5	W	ST	AF	BN	8
NSS002	596953	733504	20	D	0.5	W	ST	AF	BN	8
NSS003	598218	733740	30	D	2.0	W	ST	AF	BN	4
NSS004	597750	733793	30	WD	2.0	W	ST	AF	BN	4
NSS005	598434	732043	130	ND	N/A	W	ST	AC	BN	4
NSS006	599102	732211	170	D	1.0	D	CL	AC	BN	8
NSS007	595904	732407	180	D	2.0	W	STCL	AC	BN	12
NSS008	595299	730724	85	D	1.0	D	CL	AC	BN	8
NSS009	595025	730278	75	D	1.0	S	STCL	AC	BN	6
NSS010	595239	730074	80	D	0.8	D	STCL	AC	LTBN	8
NSS011	596065	730141	120	WD	2.0	W	CL	AC	BN	4
NSS012	595029	729527	200	ND	0.8	D	CL	AC	RDBN	6
NSS013	595497	729039	85	WD	1.0	L	CL	AF	BNBK	4
NSS014	595925	728964	210	ND	0.5	D	CL	AC	BN	4
NSS015	599018	729059	7	D	2.0	W	STCL	AC	DGY	16
NSS016	597935	728633	270	WD	2.5	W	STCL	AC	DGY	6
NSS017	597806	728773	150	WD	2.0	D	STCL	AC	RDBN	16
NSS018	597252	728613	140	WD	2.0	W	CLST	AC	DGY	8
NSS019	597220	727849	10	WD	2.0	W	CLST	AC	BNGY	4
NSS020	596003	727752	15	D	1.5	W	CLST	AC	DGY	4

NORTH WEST RESOURCES LIMITED
STREAM SEDIMENT SAMPLE LOG SHEET

PROJECT: NYINAHIN

DATED: AUGUST 2006

SAMPLE NUMBER	UTM EAST	UTM NORTH	S T R E A M			S A M P L E				A S S A Y
			DIR (0)	NATURE	WIDTH(m)	MOIT	TEXTURE	HOR	COLOUR	Au. FINAL
1-6	7-12	13-18	19-21	22-23	24-25	26	27-30	31-32	33-36	Au. FINAL
NSS021	598676	729991	170	D	1.0	L	CL	AF	BN	6
NSS022	598896	727698	125	D	1.5	D	CL	AF	GY	6
NSS023	598731	727151	160	D	1.0	D	CL	AC	GY	10
NSS024	598707	726960	85	D	1.5	W	CL	AC	GYBN	4
NSS025	599103	726550	70	D	1.0	W	CL	AC	B	2
NSS026	607413	720404	300	D	0.8	D	ST	AF	BN	2
NSS027	607323	720407	5	ND	0.4	D	ST	AF	GY	8
NSS028	607476	719127	290	D	1.5	L	SDST	AF	GY	26
NSS029	607679	718730	230	ND	0.4	D	CL	AF	BN	6
NSS030	607373	717753	200	D	2.0	W	CL	AC	BN	4
NSS031	607002	717718	120	D	1.0	D	CL	AF	BN	8
NSS032	606611	717353	280	ND	0.4	D	STCL	AF	BN	16
NSS033	595410	728180	155	WD	1.0	W	ST	AC	BN	8
NSS034	594479	727431	130	D	1.2	W	STCL	AC	DGY	8
NSS035	594525	727242	60	D	2.0	W	STCL	AC	RDBN	6
NSS036	594896	725906	105	D	1.5	L	CL	AC	BN	4
NSS037	594724	725792	140	D	1.2	W	CL	AC	GYBN	12
NSS038	594717	725627	30	D	0.8	D	CL	AF	GY	6
NSS039	595461	725606	95	D	1.2	D	CL	AF	BN	10
NSS040	595640	725806	175	D	1.5	W	CL	AC	BN	4

NORTH WEST RESOURCES LIMITED
STREAM SEDIMENT SAMPLE LOG SHEET

PROJECT: NYINAHIN

DATED: AUGUST 2006

SAMPLE NUMBER	UTM EAST	UTM NORTH	S T R E A M			S A M P L E				A S S A Y
			DIR (0)	NATURE	WIDTH(m)	MOIT	TEXTURE	HOR	COLOUR	Au. FINAL
1-6	7-12	13-18	19-21	22-23	24-25	26	27-30	31-32	33-36	Au. FINAL
NSS041	596219	725305	75	D	0.8	D	CL	AF	BN	2
NSS042	596670	725298	45	D	1.0	W	CL	AC	BN	4
NSS043	596870	725534	195	D	1.0	D	CL	AF	BN	4
NSS044	597371	725348	135	D	2.0	D	CL	AF	LGY	44
NSS045	596455	726199	150	D	1.0	D	CL	AF	BN	2
NSS046	596662	726314	120	D	1.0	L	ST	AC	BN	2
NSS047	596934	724383	80	D	2.0	D	CLST	AC	BN	2
NSS048	597778	724526	30	D	2.0	M	STCL	AC	GY	4
NSS049	598687	725155	150	D	1.5	D	CLST	AC	DGY	62
NSS050	599778	724889	60	D	1.0	D	ST	AF	LGY	6
NSS051	600141	724889	30	D	1.0	D	ST	AF	DGY	12
NSS052	600977	725148	330	D	1.2	D	CLST	AF	LGY	18
NSS053	599390	727442	120	D	1.0	D	CLST	AC	GY	2
NSS054	594409	723667	220	D	1.0	D	SDST	AC	DGY	12
NSS055	594223	723556	150	D	1.5	D	SDST	AC	GY	4
NSS056	594216	723399	40	D	1.0	D	ST	AF	DGY	8
NSS057	594996	723313	150	WD	2.0	W	ST	AC	DGY	6
NSS058	595168	723024	15	D	1.5	W	ST	AC	DGY	4
NSS059	595883	723052	20	D	0.5	D	ST	AF	DGY	4
NSS060	596212	723274	160	D	0.8	D	ST	AF	DGY	2

NORTH WEST RESOURCES LIMITED
STREAM SEDIMENT SAMPLE LOG SHEET

PROJECT: NYINAHIN

DATED: AUGUST 2006

SAMPLE NUMBER	UTM EAST	UTM NORTH	S T R E A M			S A M P L E				A S S A Y
			DIR (0)	NATURE	WIDTH(m)	MOIT	TEXTURE	HOR	COLOUR	Au. FINAL
1-6	7-12	13-18	19-21	22-23	24-25	26	27-30	31-32	33-36	Au. FINAL
NSS061	596362	723188	340	ND	0.5	D	ST	AF	DGY	228
NSS062	596627	723556	170	ND	0.4	D	ST	AF	BN	4
NSS063	595985	721638	200	D	1.5	D	CL	AC	CM	20
NSS064	595811	721680	160	D	2.0	W	CLST	AC	CMBN	12
NSS065	595746	721568	100	D	2.0	L	CLST	AC	BN	4
NSS066	595989	720898	25	D	1.5	W	CL	AC	RDBN	4
NSS067	596902	720627	45	D	1.5	D	CL	AC	GYBN	4
NSS068	591427	722916	175	D	1.5	L	CL	AC	BN	16
NSS069	591734	722802	240	D	1	W	CL	AF	BN	2
NSS070	592371	722151	270	D	1.5	P	CL	AC	BN	20
NSS071	592664	720713	275	D	1.0	D	CL	AF	BN	6
NSS072	597618	721468	85	WD	1.0	L	CL	AF	BN	4
NSS073	597874	722095	95	D	1.0	D	ST	AF	BN	2
NSS074	598259	721876	250	D	0.5	D	ST	AF	BN	6
NSS075	598881	721115	180	D	1.0	D	ST	AF	BN	24
NSS076	599423	720573	150	D	1.0	W	CL	AC	BN	6
NSS077	599647	720658	170	D	0.8	D	STCL	AC	GYBN	66
NSS078	600314	720429	120	D	0.6	D	ST	AF	BN	2
NSS079	599600	721820	130	D	0.8	D	CL	AC	BN	2
NSS080	599765	721943	160	D	0.4	D	CL	AF	GYBN	2

**NORTH WEST RESOURCES LIMITED
STREAM SEDIMENT SAMPLE LOG SHEET**

PROJECT: NYINAHIN

DATED: AUGUST 2006

SAMPLE NUMBER	UTM EAST	UTM NORTH	S T R E A M			S A M P L E				A S S A Y
			DIR (0)	NATURE	WIDTH(m)	MOIT	TEXTURE	HOR	COLOUR	Au. FINAL
1-6	7-12	13-18	19-21	22-23	24-25	26	27-30	31-32	33-36	Au. FINAL
NSS081	600593	721642	120	D	1.0	D	CL	AC	GY	4
NSS082	601031	721800	170	D	1.5	D	ST	AC	BN	4
NSS083	601147	721286	85	D	1.5	D	ST	AC	BN	4
NSS084	601687	721033	30	ND	0.4	D	ST	AC	DGY	6
NSS085	601633	721375	210	D	1.2	D	ST	AC	GY	2
NSS086	602180	721389	185	D	1.5	D	ST	AC	DGY	6
NSS087	593937	720871	150	D	2.0	M	CL	AC	DGY	30
NSS088	594059	721035	150	D	1.0	M	STCL	AC	BN	4
NSS089	594424	719698	140	D	1.5	M	CLST	AC	DGY	12
NSS090	594567	719319	40	D	1.0	M	CLST	AC	DGY	8
NSS091	595389	719884	190	D	3.0	D	STCL	AC	CM	4
NSS092	596140	719362	220	D	1.0	D	ST	AC	CMBN	8
NSS093	598299	720215	140	ND	N/A	D	CL	AF	GY	2
NSS094	598613	720143	225	D	0.5	L	CL	AC	GY	4
NSS095	598456	719753	315	D	1.0	W	STCL	AC	BN	4
NSS096	598886	719332	135	D	1.5	D	CL	AC	BN	8
NSS097	599069	719310	175	D	0.5	W	CL	AC	BN	4
NSS098	599096	719641	275	D	0.5	W	CL	AC	BN	2
NSS099	599799	719296	120	D	0.5	L	CL	AC	BN	4
NSS100	599978	719543	235	ND	0.2	D	CL	AF	BN	6

NORTH WEST RESOURCES LIMITED
STREAM SEDIMENT SAMPLE LOG SHEET

PROJECT: NYINAHIN

DATED: AUGUST 2006

SAMPLE NUMBER	UTM EAST	UTM NORTH	S T R E A M			S A M P L E				A S S A Y
			DIR (0)	NATURE	WIDTH(m)	MOIT	TEXTURE	HOR	COLOUR	Au. FINAL
1-6	7-12	13-18	19-21	22-23	24-25	26	27-30	31-32	33-36	Au. FINAL
NSS101	600596	719373	105	D	1.0	D	CL	AF	BN	2
NSS102	599587	722895	170	D	1.0	D	ST	AC	DGY	26
NSS103	600442	722525	230	D	1.5	D	ST	AC	BN	4
NSS104	596612	721053	200	ND	0.4	D	CL	AF	BN	8
NSS105	604213	719885	240	ND	0.3	D	CL	AF	BN	6
NSS106	604175	720312	250	D	1.0	D	CLST	AF	BN	6
NSS107	604625	721688	300	D	1.5	D	CL	AC	BN	4
NSS108	605386	721940	330	D	2.0	W	ST	AC	BN	72
NSS109	606267	721219	140	D	0.8	D	ST	AF	BN	30
NSS110	606334	721080	60	D	1.0	D	ST	AF	BN	46
NSS111	606247	719230	200	D	1.2	D	CL	AC	BN	2
NSS112	606358	719157	220	WD	2.0	L	CL	AC	BN	6
NSS113	606157	718804	240	D	1.0	D	CL	AF	LBN	4
NSS114	605181	717760	220	D	1.5	M	CL	AC	BN	12
NSS115	604093	718111	205	D	1.0	D	CL	AC	GY	8
NSS116	603476	718562	175	D	2.0	D	ST	AC	CM	8

NORTH WEST RESOURCES LIMITED

NYINAHIN CONCESSION

TERMINAL REPORT

APPENDIX II

ANALYTICAL RESULTS

AUGUST 2006

Stream Sediments survey

Sample_ID	UTMeast	UTMnorth	Suppb
-----------	---------	----------	-------

NSS001	598691	734367	8
NSS002	596953	733504	8
NSS003	598218	733740	4
NSS004	597750	733793	4
NSS005	598434	732043	4
NSS006	599102	732211	8
NSS007	595904	732407	12
NSS008	595299	730724	8
NSS009	595025	730278	6
NSS010	595239	730074	8
NSS011	596065	730141	4
NSS012	595029	729527	6
NSS013	595497	729039	4
NSS014	595925	728964	4
NSS015	599018	729059	16
NSS016	597935	728633	6
NSS017	597806	728773	16
NSS018	597252	728613	8
NSS019	597220	727849	4
NSS020	596003	727752	4
NSS021	598676	729991	6
NSS022	598896	727698	6
NSS023	598731	727151	10
NSS024	598707	726960	4
NSS025	599103	726550	2
NSS026	607413	720404	2
NSS027	607323	720407	8
NSS028	607476	719127	26
NSS029	607679	718730	6
NSS030	607373	717753	4
NSS031	607002	717718	8
NSS032	606611	717353	16
NSS033	595410	728180	8
NSS034	594479	727431	8
NSS035	594525	727242	6
NSS036	594896	725906	4
NSS037	594724	725792	12
NSS038	594717	725627	6
NSS039	595461	725606	10
NSS040	595640	725806	4
NSS041	596219	725305	2
NSS042	596670	725298	4
NSS043	596870	725534	4
NSS044	597371	725348	44
NSS045	596455	726199	2
NSS046	596662	726314	2
NSS047	596934	724383	2
NSS048	597778	724526	4
NSS049	598687	725155	62
NSS050	599778	724889	6
NSS051	600141	724889	12
NSS052	600977	725148	18
NSS053	599390	727442	2
NSS054	594409	723667	12
NSS055	594223	723556	4
NSS056	594216	723399	8
NSS057	594996	723313	6
NSS058	595168	723024	4
NSS059	595883	723052	4
NSS060	596212	723274	2
NSS061	596362	723188	228
NSS062	596627	723556	4

Stream Sediments survey

NSS063	595985	721638	20
NSS064	595811	721680	12
NSS065	595746	721568	4
NSS066	595989	720898	4
NSS067	596902	720627	4
NSS068	591427	722916	16
NSS069	591734	722802	2
NSS070	592371	722151	20
NSS071	592664	720713	6
NSS072	597618	721468	4
NSS073	597874	722095	2
NSS074	598259	721876	6
NSS075	598881	721115	24
NSS076	599423	720573	6
NSS077	599647	720658	66
NSS078	600314	720429	2
NSS079	599600	721820	2
NSS080	599765	721943	2
NSS081	600593	721642	4
NSS082	601031	721800	4
NSS083	601147	721286	4
NSS084	601687	721033	6
NSS085	601633	721375	2
NSS086	602180	721389	6
NSS087	593937	720871	30
NSS088	594059	721035	4
NSS089	594424	719698	12
NSS090	594567	719319	8
NSS091	595389	719884	4
NSS092	596140	719362	8
NSS093	598299	720215	2
NSS094	598613	720143	4
NSS095	598456	719753	4
NSS096	598886	719332	8
NSS097	599069	719310	4
NSS098	599096	719641	2
NSS099	599799	719296	4
NSS100	599978	719543	6
NSS101	600596	719373	2
NSS102	599587	722895	26
NSS103	600442	722525	4
NSS104	596612	721053	8
NSS105	604213	719885	6
NSS106	604175	720312	6
NSS107	604625	721688	4
NSS108	605386	721940	72
NSS109	606267	721219	30
NSS110	606334	721080	46
NSS111	606247	719230	2
NSS112	606358	719157	6
NSS113	606157	718804	4
NSS114	605181	717760	12
NSS115	604093	718111	8
NSS116	603476	718562	8