



SUNERGY

www.sunergygold.com

OTCBB: SNEY

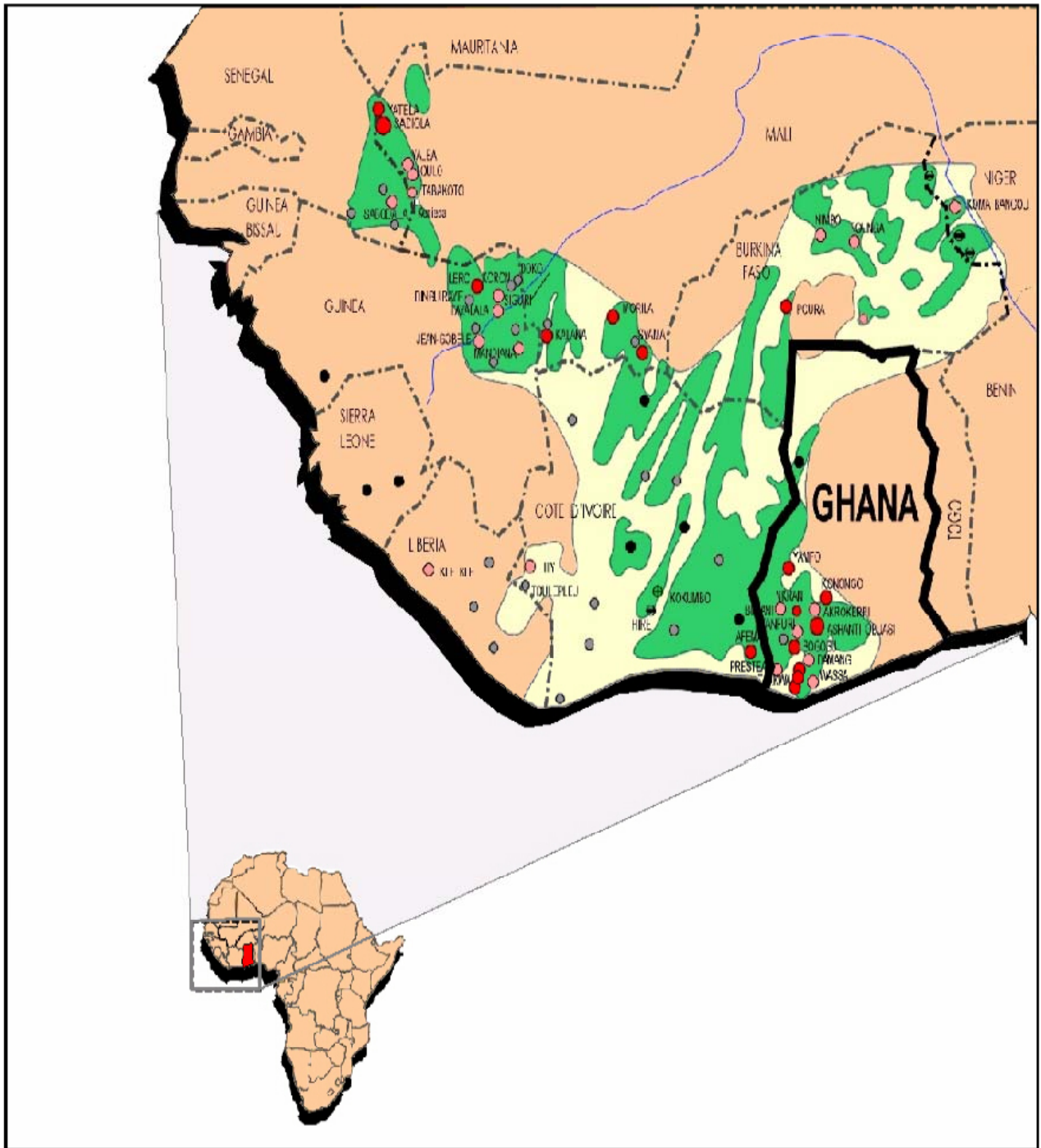


SUNERGY, Inc.

**Managements Plan With Budgets To Achieve Near Term Gold Production
Nyinahin Mining Concession near Bibiani, Ghana, West Africa**

14362 N. Frank Lloyd Wright Blvd
Scottsdale, AZ 85260
480.477.5810

Note: This report represents management's objectives and expected outcomes. However, no assurance can be made that any or all of management's objectives and expected outcomes will be achieved. Each investor should conduct a thorough review of the company's assets and opportunities to determine if they concur.



The Company

SUNERGY, Inc.(OTCBB: SNEY) is a fully reporting, publicly listed and traded, production oriented junior mining company engaged in the evaluation, acquisition, exploration, planned operation and advancement of gold/silver/diamond development projects in Ghana, West Africa.

Note: This report represents management's objectives and expected outcomes. However, no assurance can be made that any or all of management's objectives and expected outcomes will be achieved. Each investor should conduct a thorough review of the company's assets and opportunities to determine if they concur.

The Project

Nyinahin Mining Concession



Effective October 31, 2008, Sunergy completed the acquisition of 100% interest in Mikite Gold Resources ("Mikite"), a Ghanaian corporation with exclusive exploration rights to the Nyinahin Mining Concession near Bibiani, Ghana. The Mineral rights are for gold, diamonds and base metals.

The 150 square kilometer Nyinahin mining concession is located between two geological gold belts, the Bibiani Belt to the west and the Asankrangwa to the east. The property shares borders with several major mining companies, including Newmont Mining, Napoli Gold and Dunkwa Continental Goldfields. The district is home to the famous Ashanti Goldfields-Obuasi Mines and is one of the most active exploratory areas in the world.

A preliminary survey by Geodita Resources LTD, Ghana, indicates that the Nyinahin Concession has significant potential for lode gold mineralization and for recovery of alluvial gold. There are 3 major anomalous zones: Owusbukurom anomaly in the center Ntoboroso anomaly in the southeast and the Krakyekurom anomaly in the southwest. There are 4 known mineralized trends: Baaneekurom-Nyinahin, Ntoboroso, Owusukurom-Adupiri and Krakyekurom-Adupiri. The reconnaissance has also shown several abandoned surface mines that are yet to be investigated due to time and budget constraints of the current owners.

Location and Access

About 80% of the Nyinahin Concession lies to the west of the Offin River within the Ashanti Region of Ghana. The property is accessed via the main Kumasi-Bibiani trunk road and is located 48km southwest of Kumsasi and 20km northwest of Bibiani. Adequate ground water appears to be available for diversion for future mining operations. Electrical power is supplied by the National Grid and Infrastructure facilities are available within the concession from notable towns which include Nyinahin, Akorabuokurom, Baaneekurom, Nagore and Ntoboroso.

Evidence of past exploration and mining activities exist in the form of pits and adits. There is a strong clustering of artisan pits located along the Offin River. Three old gold prospects exist on the concession. The first is located about 2.0 km SE of the village of Akorabuokurom and 3km from the village of Otaakurom, the second 1.8km SW of to the east of the concession, whilst the third is located along the south eastern boundary near the village of Owuokurom. Fragments of phyllite, greywacke and quartz are noted in the spoils of these pits.

A systematic exploration program was initiated in July 2008. The work consisted of active stream sediment sampling and geological mapping. Application to the Minerals Commission in Ghana upgraded this 150 sq. km. Nyhinahin mineral concession from a reconnaissance license to a 2 year renewable full prospecting license.

Why Ghana

We believe the country is an attractive location due to its stability and its history (Former British Colony independent since 1957). There are favourable mining laws and recently numerous major gold producers have begun defining what we believe will become one of the world's most prolific gold belts.

The Opportunity

SNEY will begin a gold purchasing program from the artisan's already working on the concessions; coupled with an oxide mineralization exploration and development plan designed to result in oxide gold recovery through gravity/wash plant operations on concession areas. The Artisans typically recover about 30% of the

Note: This report represents management's objectives and expected outcomes. However, no assurance can be made that any or all of management's objectives and expected outcomes will be achieved. Each investor should conduct a thorough review of the company's assets and opportunities to determine if they concur.

available gold using crude methods by hand. Modern mechanized methods are able to recover an additional 60% at the rate of 200 tons/hour. There is good harmony in working with the locals, rather than putting them out of work.

The purchasing program from the locals will be immediately profitable with profits initially being contributed to the development of alluvial production equipment and operations..

SNEY will purchase gravity/wash plant(s) and a field smelting facility to further recovery after the Artisan hand operations recover the initial gold. Once profitable, SNEY will reserve 60% of the gold recovered .to guarantee anticipated future Gold Debenture financing for growth through acquisition of profitable targeted gold recovery operations.

Timing

Within 45 days of funding, SNEY will start it's Gold Buying Program. Within 90 days of funding, SNEY will begin mechanized gold recovery operations on the already previously worked Artisan pits along the Offin river. The operation is profitable from day one because the initial gold is bought at a subatantial discount and the cash cost of mechanized gold recovery will be less than \$400/ ounce.

Management

The management team including the Directors and Advisory board members have more than 125 years of mining industry experience with junior and mid-tier companies involved in exploration, development and production of precious metals. The team consists of:

Karl A. Baum, President and Director

- Over 5 years direct experience in mining in Ghana operating @ 7,000 tons/day
- Educated at ASU and Thunderbird School of Global Management
- Has developed large Scale contracts throughout the west Africa region

P.K. Rana Medhi, Chairman of The Board, Director

- Over 40 years of experience in the mining industry; including 28 years with Cyprus Amax Minerals
- Registered Mining and Engineering Geologist working as an Independent Consultant
- Chairman of the Board of Governors of the Arizona Department of Mines and Mineral Resources..

Robert A. Levich, CPG, PG, EurGeol, FSEG, FSGA, Director

- 31 years with US Department of Energy (DOE)-headed up famous Yucca Mountain Project
- Now resides in Ghana with wife which offers hands on management of Company projects
- Enjoys substantial business and geological contacts in Ghana.

Stephen B. Parent, Advisory Board Member

- Over 30 years of experience in the mining industry with 2 mines put into production.
- Managed the exploration ,development and production of junior public mining companies.
- Founder of General Metals Corporation currently putting gold and silver mine in production.

Ne Ne Agbonoo Abasi III, Advisory Board Member

- Regional Chief of Royal Kabiawertsu Divisional Council of Ada in the greater Accra District
- Educated in Ghana, Gambia and UK receiving the ACCA degree in accounting.
- More than 10 years in alluvial gold mining in Ghana with local business connections.

Kerry Bjornson, Advisory Board Member

- 20 years of experience in the mining industry.
- Contract Mine construction in US for gold, silver and copper.
- Chief Executive Officer, Gold Canyon Mining and Construction.

Note: This report represents management's objectives and expected outcomes. However, no assurance can be made that any or all of management's objectives and expected outcomes will be achieved. Each investor should conduct a thorough review of the company's assets and opportunities to determine if they concur.

Business Strategy / Budgets / Use of Funds

The following activities with budgeted costs are recommended to move the Nyinahin Mining Concession toward production.

To Be Raised Funds –	
Gold Purchasing Program and Gravity/Wash Plant Production:	
Gold Purchasing Program	\$ 150,000
Wash Plant Purchase	250,000
Operating and Permitting Costs to Operate the Wash Plant	50,000
Administrative and Overhead Costs	50,000
Total To Be Raised	<u>\$ 500,000</u>

Financial Summary

Sunergy has several former producing mines and numerous Artisan pits along the Offin River which will be worked for the 60+% of the gold left behind by the Artisans. With the initial purchase of a gravity/wash plant we will begin in Quarter 2 of 2009 at an initial rate of 2,000 – 3,000 ounces per month stabilizing @ 3,000/month over quarter 3 and 4 for the first year. Once stabilized, the Company will add 1 gravity/wash plant during Quarter 1 and 2 in each of the next two years increasing production by 36,000 ounces per year for each plant. The Company anticipates growing annual production to over 100,000 oz/year which results in projected earnings of \$30,000,000 - \$40,000,000 per year.

Year ended December 31, 2009						
	2009	2010	2011	2012	2013	2014
Total Material Processed (000's t)	150	250	500	750	750	750
Gold Recovered (000's oz)	22	36	72	100	100	100
Revenue (000's US\$)	19,800	32,400	64,800	90,000	90,000	90,000
Permitting, Development & Production Capital (000's US\$)	(1,000)	(1,000)	(1,000)	(1,000)	(1,000)	(1,000)
Net Cashflow (000's US\$)	6,700	11,600	24,200	34,000	34,000	34,000

Summary of Investment Opportunity

Operations

Given the successful transition to a precious metals producer, the additional significant upside anticipated by management will be achieved by successfully utilizing the profits generated by the concessions to build shareholder value through becoming a mid-tier producer; entering a niche in the industry recently vacated by other companies through merger or acquisition by larger companies which brought enormous gains to their shareholders. This growth occurs through expanding reserves and resources in properties where the company's operational and developmental expertise is used to build shareholder and operational value. Historically, it is not uncommon for mid tier precious metal producers to be trading at 40 to 100 times earnings.

Spot Price of Gold and Silver

Gold and Silver have been in a seven year bull market taking gold and silver prices to all time high's in recent times. Management believes that macro economic conditions domestically and internationally are likely to keep prices at current levels and very likely take them to after inflation highs or higher for gold and silver. Gold's after inflation equivalent to its 1981 high is over \$2,000 per ounce. Continued rising spot prices increased return opportunities at every level along the way.

Note: This report represents management's objectives and expected outcomes. However, no assurance can be made that any or all of management's objectives and expected outcomes will be achieved. Each investor should conduct a thorough review of the company's assets and opportunities to determine if they concur.

For those investors favouring a rise in gold prices, Sunergy is offering the following opportunity to be repaid in gold at a substantial discount through the Debenture below.

SUNERGY, INC.

CONVERTIBLE GOLD DEBENTURE

Issuer: SUNERGY, Inc.

Offering: Debenture convertible into gold

Offering size: \$1,500,000 USD

Interest: 12.5% per annum calculated annually and payable at maturity

Maturity: 1 year from closing date

Price: \$1500 USD per debenture

Conversion: Principal and accrued interest convertible into 2 ounces of gold per \$1500 USD face value. The purity of the gold will be 999.9% and accompanied by an assay certificate

Election Period: 90 days prior to maturity holders must make an election to receive gold or cash as the form of re-payment. Those that do not respond will be deemed to have elected to receive gold

Security: General charge against all the company's assets. The Issuer shall also deposit 60% of its monthly gold production into a dedicated account at the refinery until it has deposited sufficient gold to cover the conversion of 100% of the debentures.

Closing: Closing is negotiable

Contact: Karl A. Baum, President, Director @949.244.1378 karl@sunergygold.com
or
Steve Parent, Advisory Board Member @ 480.399.7222 steve@sunergygold.com

14362 N. Frank Lloyd Wright Blvd
Scottsdale, AZ 85260
480.477.5810
480.477.5811 Fax

Note: This report represents management's objectives and expected outcomes. However, no assurance can be made that any or all of management's objectives and expected outcomes will be achieved. Each investor should conduct a thorough review of the company's assets and opportunities to determine if they concur.

Artisan Miners recovering gold using primitive hand methods. Usual rate of recovery about 30% (approximately 15 ounces per day), which leaves 60+% for wash plant recovery operations.



Gold Concession Ghana, West Africa

Note: This report represents management's objectives and expected outcomes. However, no assurance can be made that any or all of management's objectives and expected outcomes will be achieved. Each investor should conduct a thorough review of the company's assets and opportunities to determine if they concur.